



THE BRAND BOOK

TOLLGÅRD

WWW.TOLLGARD.COM

THE BRAND BOOK

Works

of

THE PIECES THAT ENGAGE AND ENDURE.
THE STORIES THAT INTRIGUE.

Art

&

Craft



← Danish designer-makers Overgaard & Dyrman actively preserve traditional techniques, merging them with modern technology.



→ Contemporary American craftsmen Brightbound focus on the materiality of objects, imbuing each product with a handmade edge.



← Designed exclusively by Tollgård for masters in stone, The Refined Workshop, the Wave Collection was brought to life by the harmonious hands of man and machine. Founder Staffan Tollgård inspects the first edition created in Grand Antique marble: a stone with a remarkable history dating back to Roman times.

Before furniture was mass produced, the hand of the maker was always visible. We have always been fascinated by stories – by the artists and craftspeople behind the pieces and brands. Collected within these pages are some of the most dedicated, passionate and talented makers working in the world of furniture today. The red thread—the creative DNA—that binds these makers from more than a dozen countries is the value they place on how things are made, the questions of living that they answer, and the honesty of their ingredients. The result: pieces that engage and endure. Stories that intrigue. Beautifully functional design. The hand-working of metal, leather and wood has created its own language reminiscent of the principles of mid-century modern: less is more—honesty in manufacturing techniques and truth to the materials at their heart.

From Ceccotti Collezioni, Overgaard & Dyrman and Van Rossum on our European shores; to the East Coast heroes found at BassamFellows, Token, Skram, Juniper and RBW; to the South African artisans at Indigenus and Okha—we see a richness and a rawness that makes it hard to look away. Welcome to our Brand Book. We are so proud to bring this collection to you.

Words by:
STAFFAN TOLLGÅRD
FOUNDER & CREATIVE DIRECTOR

A STORY OF SPACE,
LIFE & KINSHIP

TOLLGÅRD

Staffan Tollgård

Staffan is an award-winning interior and product designer as well as an internationally recognised curator of global contemporary design. Born in Stockholm, he went on to study film at Bournemouth University and later design at the Inchbald School where he crystallised his ethos into two principles. The search for the Scandinavian notion of the distinctive 'Red Thread' or creative DNA in each project, and the commitment to the creation of functional sculpture underline every project he undertakes. These twin philosophies have also led to the founding of three London-based design stores housing modern and contemporary design classics from around the globe.

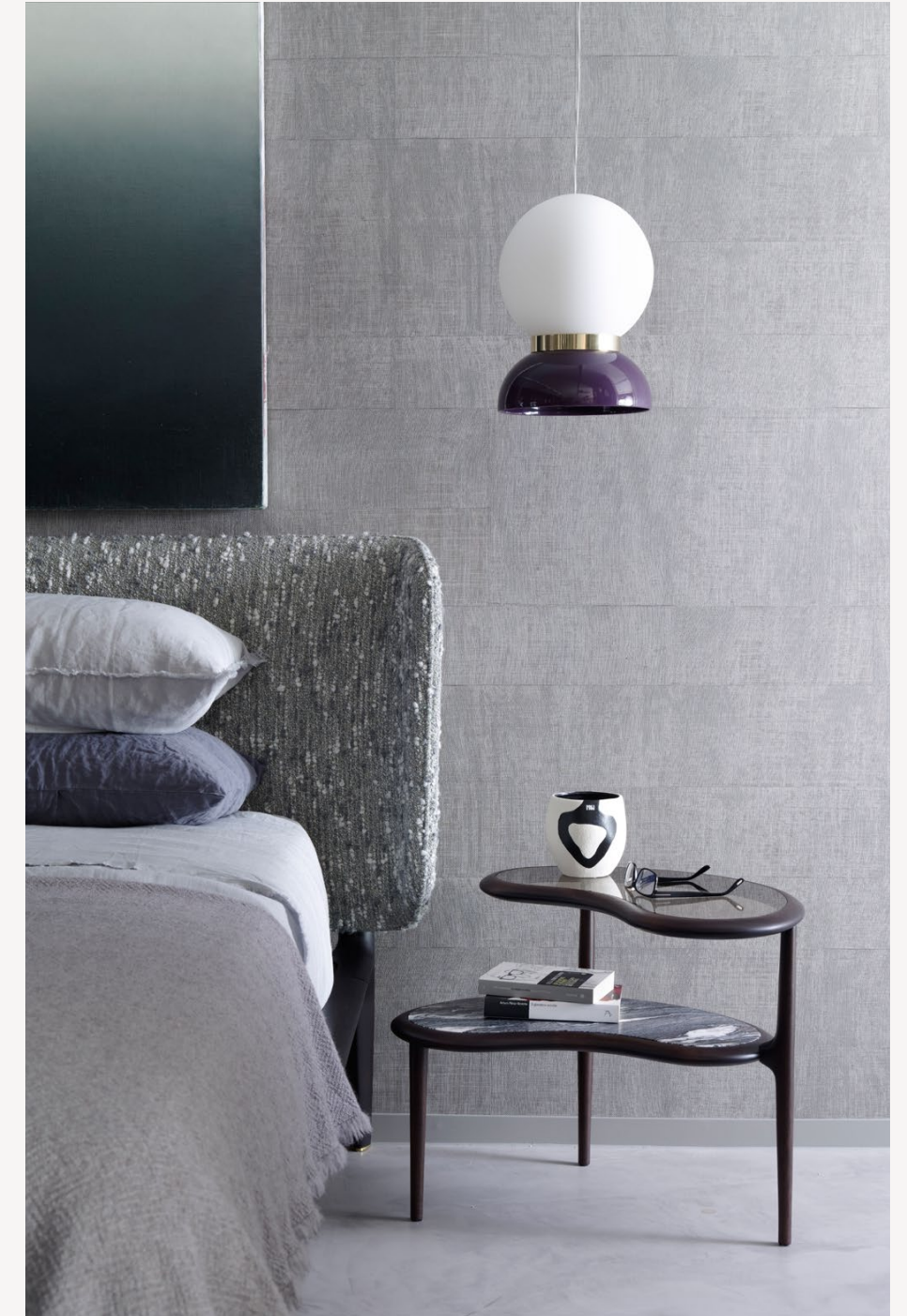
Monique Tollgård

Monique grew up in Johannesburg and London. A childhood spent moving between countries and cultures ignited a lifelong love of travel and a fascination with how different cultures answer questions of living. Monique's love of storytelling led her to a First-Class degree in English Language & Literature at Oxford University, followed by work as an actress and producer of documentaries before finding home within interior design. Monique trained in design at The Inchbald School and now regularly lectures there, as well as taking an active role in the design industry as a sought-after speaker, writer and thought leader.





← Our showrooms are home to a roster of international brands built on authentic design values and impeccable craftsmanship.



→ We are proud to operate Ceccotti's London showroom, showcasing its portfolio of furniture and lighting—instantly recognisable for its elegant curves, contemporary eccentricity, and impeccable finish.



← For the Dojo's new London offices, Tollgard Contracts supplied pieces with a residential, timeless, mid-century modern feel to connect the essence of home with the functionality of the office.

Starting with a handful of brands that Staffan and Monique were eager to share with the design community, Tollgard has quickly grown into a library of over 200 global brands, offering furniture, lighting, and accessories.

Relationships: We are hands-on, and service driven. We build warm, long-standing relationships with our clients and aim to add value at every stage we are needed. From the outset through our in-depth product knowledge, or ownership of a finished scheme to ensure things runs smoothly and efficiently.

Consultation: With free and unbiased furniture and lighting specification service, we specialise in modern and contemporary furniture across residential and commercial projects with our portfolio of global brands. Fast, attentive sampling. Deep brand knowledge. Project managed deliveries. Commercially suitable products for each sector. Unrivalled problem-solving.

Inspiration: Tollgard aims to be a reference point for the creative community, sharing our discoveries and leading a journey of collective inspiration. We represent manufacturers that share our passion for functional design and impeccable craft.



Our Showrooms:

Tollgard Chelsea & Ceccotti Collezioni
First Floor, Centre Dome
Design Centre Chelsea Harbour
London
SW10 0XE

Tollgard Belgravia
Grosvenor Waterside
Gatliff Road
London
SW1W 8QN

Tollgard Showrooms

Curating the best of contemporary global design, Tollgard are proud to offer three showrooms in London. Ceccotti Collezioni and Tollgard Chelsea are found in the Design Centre Chelsea Harbour. Our flagship showroom is a little further down the river at Grosvenor Waterside, Belgravia.

If you're working on a residential project, please get in touch with our team of showroom specialists.

+44 (0)20 8067 2123 ~ CHELSEA HARBOUR
+44 (0)20 7952 6070 ~ BELGRAVIA
SHOP@TOLLGARD.COM

Tollgard Contracts:

Tollgard Belgravia
Grosvenor Waterside
Gatliff Road
London
SW1W 8QN

Tollgard Contracts

Dedicated to commercial supply, Tollgard Contracts works across all sectors including workspace and hospitality. Tollgard Contracts operates from Grosvenor Waterside, Belgravia.

If you would like to discuss a commercial project with us, please speak to our experienced Contracts Team, headed by Max Pilbeam.

+44 (0)20 7952 6063
CONTRACTS@TOLLGARD.COM

OUR BRANDS

TOLLGÅRD

“Many of our brand partners share our DNA: a commitment to service, a passion for design excellence and a story worth sharing.”

Staffan Tollgård
Founder and Creative Director

Index

OUR BRANDS

24	Agapecasa	95	Linteloo
26	ANDlight	99	Luteca
27	Anour	102	Malte Gormsen Kollektion
28	Arflex	104	Matthew McCormick
30	Astep	106	Mernøe
31	Bocci	107	Moroso
32	BassamFellows	109	Man of Parts
34	Bieke Casteleyn	112	Meridiani
35	Buster & Punch	114	Michael Anastassiades
36	Byarums Bruk	116	Molteni & C
39	Ceccotti Collezioni	118	Nemo
42	Cocoon	120	Occhio
44	CTO Lighting	122	OKHA
47	De Castelli	123	OneCollection
50	De La Espada	124	Overgaard & Dyrman
53	Eikund	127	Piet Boon
56	Entrelacs	130	Porada
59	Exteta	132	PP Møbler
62	House of Finn Juhl	133	Quasar Holland
64	Flexform	135	RBW
66	Gabriel Scott	138	Resident
68	Gemla	139	Röshults
70	Giopatto and Coombes	140	Rubn
72	Giorgetti	141	SkLO
75	Henge	143	Skram
79	Indigenus	146	System 180
83	Juniper	148	Tacchini
86	KBH	150	Thayer Coggin
87	Karakter	151	Time & Style
88	Lange	152	Token
89	La Manufacture	154	Van Rossum
90	Lasvit	156	Vibia
91	Lladró	159	Vipp
92	Lema		



CLUB 44 CHAIR



EROS COFFEE TABLE

AGAPECASA

Agapecasa
 Founded in 1973, Agapecasa is today a byword for beautiful, contemporary home furnishings. In partnership with the Angelo Mangiarotti estate, Agapecasa breathes new life into a series of unique furniture designs by the great Angelo Mangiarotti: an icon of 20th-century design. A hand-picked collection of gems, the collection includes luminaires, chairs, tables, shelves and storage units; each skilfully crafted using the designer's original blueprints and functioning innovatively and intelligently for modern life.

Origin: **Italy**
 Offering: **Furniture | Lighting**



EROS TRIANGOLARE



M TABLE



ECCENTRICO TABLES



ASOLO



IRIS PENDANTS



COLUMN SYSTEM



I MODEL PENDANT



T MODEL



ANDlight

From their native Vancouver, designers Lukas Peet and Caine Heintzman founded ANDlight together with Matt Davis in 2014 with the simple intention of creating beautiful lighting that is made honestly and authentically, every step of the way. ANDlight's designs have a striking level of visual impact and are technically flawless. They produce exceptional quality light for the workplace and home, without sacrificing their aesthetic: bold, and a little playful.

Origin: **Canada**
Offering: **Lighting**



VALE SYSTEM



I MODEL SCNCE



Anour

Anour lighting was established in 2007 by founder and architect Arash Nourinejad. The company produces lighting for the home that combines distinctly Danish design with the very latest LED technology. Sustainability is at the heart of the business, and Arash creates his collections with the intention that they will endure. Aesthetically, they are the essence of simplicity; truly ageless designs that are made by only the most skilled hands, using the very finest materials.

Origin: **Denmark**
Offering: **Lighting**



9000 SOFA AND GOYA SIDE TABLE

arflex

Arflex
 Italian fine furniture maker, Arflex began their journey of design in 1947 when a group of Pirelli technicians began experimenting with material and technological tradition. Their philosophy was rooted in fusing great design with innovative technology. The result would be a truly unique collection of furniture that feels modern and clean but simultaneously warm and inviting. The Arflex portfolio features design icons of the 1970's alongside contemporary creations. They have collaborated with designers and architects across the globe including the likes of Claesson Koivisto Rune, Neri & Hu and Jaime Hayon. Through each new piece, they marry the design heritage of the past with the innovation of the future.

Origin: **Italy**
 Offering: **Furniture | Accessories | Outdoor**



MARENCO SOFA SYSTEM



ARCOLORSOFA, INFINITY COFFEE TABLE AND HUG ARMCHAIRS



SB CINQUANTOTTO PENDANT



Astep

Founded by Alessandro Sarfatti, grandson of the Italian 'master of light' Gino Sarfatti, Astep was created in honour of the family's tradition of innovation: its very name is suggestive of forward motion. From his base in Copenhagen, Alessandro draws on his own extraordinary family heritage and continues to explore and push the boundaries of design today. Under his expert eye, Astep presents an edit of lighting that nods to the past whilst incorporating state-of-the-art technology to enhance the way we live.

Origin: **Denmark**
Offering: **Lighting**



MODEL 2109 CHANDELIER



28



73V PENDANT

BOCCI

Bocci

Founded by Omer Arbel in 2005, Bocci is a lighting design and manufacturing company that sits at the intersection of architecture, sculpture, invention and design. The company launched with one lighting design, '14', which remains a design classic and one of Bocci's most popular creations. Alongside '14', Bocci's growing portfolio of sculptural lighting pieces are all developed, engineered and fabricated in-house. Omer Arbel's work is particularly concerned with the mechanical, practical and chemical qualities of the materials that he uses, as well as the exploration of light as a medium.

Origin: **Canada**
Offering: **Lighting**



BRUTUS CHAIR



TRACTOR BARSTOOL



CB-40L DINING BENCH

BassamFellows

BassamFellows

The creation of architect Craig Bassam and creative director Scott Fellows, BassamFellows is an American luxury lifestyle company grounded in the principles of impeccable craftsmanship, architectural rigour, and understated sensual minimalism. With a modern craftsman aesthetic, BassamFellows seeks to forge innovative and intelligent collaborations across the world. Pieces are meticulously crafted with solid wood, robust steel, and sumptuously smooth leather. Ageing beautifully, these are true future heirlooms.

Origin: USA
Offering: Furniture



SPINDLE STOOL



GEOMETRIC LOUNGE CHAIR



BC BIEKE CASTELEYN

Bieke Casteleyn

Rejecting conformity for innovation, Belgian interior designer Bieke Casteleyn created her contemporary collection, Bieke Casteleyn_shaping objects in 2015. The organic forms she dreamt to life prove to be more than just beautiful pieces of art. Soft, subtle, and inviting, each table is a bespoke creation that focuses on elevating the living experience. Hand-made in Belgium, each table is created using a cement-based plaster technique that is carefully applied in several layers.

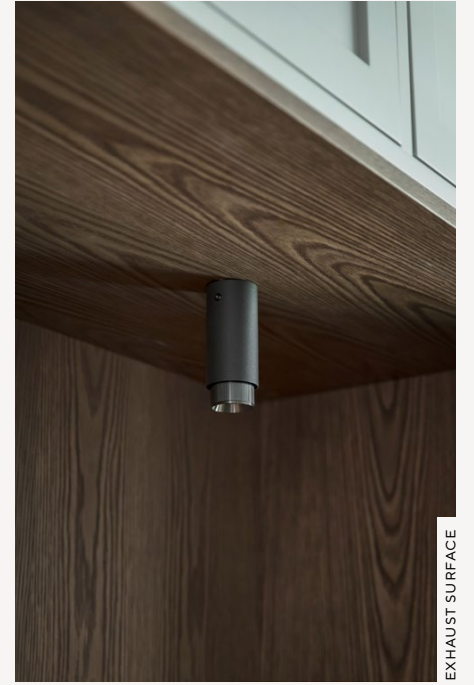
Origin: **Belgium**
Offering: **Furniture**



OUT OF LINE



FORKED PENDANT SHADE GLOBE



EXHAUST SURFACE

BUSTER + PUNCH LONDON

Buster & Punch

It's difficult to find a brand that feels as rock-and-roll as British makers, Buster & Punch. In the time-honoured tradition of many a rockstar, founder Massimo Buster Minale began to perfect his craft from his East London garage, building custom motorbikes. Trained as an architect, he realized his passion for reinventing the every day, working rare metals into extraordinary objects that sang with captivating detail. Inspired by the edge and appeal of London's fashion, music and sub-culture scenes, the brand has continued to break the rules, bringing to life an album of furniture, fittings, kitchens and accessories that hit the right note every time.

Origin: **UK**
Offering: **Furniture | Lighting**



CLASSIC NO.1

Byarums Bruk

Byarums Bruk

Byarums Bruk is a Swedish design company that creates outdoor furniture, planters and accessories. Its creations live in parks and gardens across the Nordic region, and beyond. A deep reverence for the traditional art of foundry runs through the Byarums Bruk business. For 75 years, it has used time-honoured techniques to keep this ancient craft alive and well in its own forgery, while innovating through its use of well-considered materials such as cast aluminium, which the company has pioneered the use of since its foundation by the Bokinge brothers in 1947.

Origin: Sweden
 Offering: Outdoor Furniture | Accessories



JUJOL BENCH



JUJOL BENCH



LESSEBO



UPPSALA TABLES WITH CLASSIC NO.2 CHAIRS



CECCOTTICOLLEZIONI

Ceccotti Collezioni

With a philosophical and poetic approach to fine furniture making, Ceccotti Collezioni uses time and labour-intensive methods to create breathtakingly beautiful furniture with wood sourced from strictly controlled plantations. We are fortunate to have worked with the visionary Franco Ceccotti over the past decade and operate the London Ceccotti Collezioni showroom from the Design Centre, Chelsea Harbour.

Origin: Italy
Offering: Furniture | Lighting



TERESA DINING CHAIR



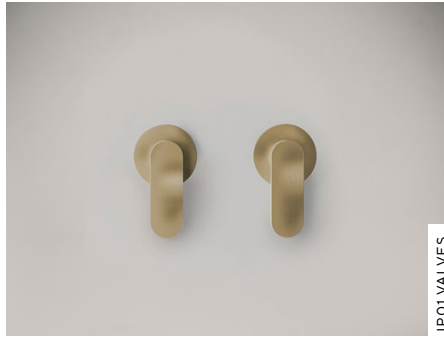
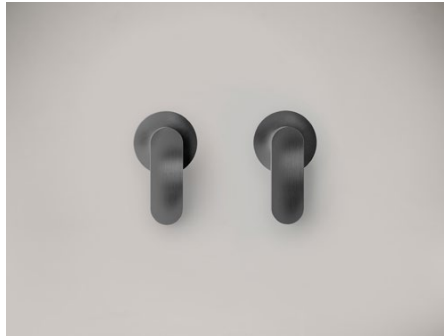
STELLAGE S2



SWEET DREAMS SIDE TABLE



TWENTY TWO ARMCHAIR



JP01 VALVES

COCOON

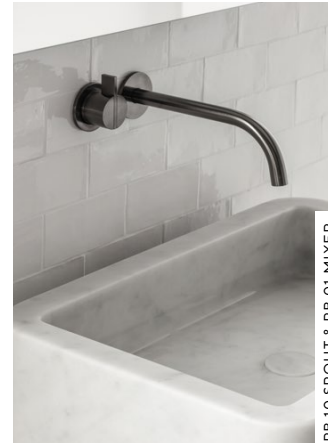
Cocoon

Rooted in warmth and a timeless aesthetic, Cocoon celebrates natural materials and enduring design excellence. A bespoke bathroom brand, their design portfolio includes stellar designers—including British architect John Pawson CBA and renowned Dutch design house Studio Piet Boon—alongside their in-house design team, Cocoon Lab. Utilising sustainable materials, these designers focus on creating future classics that bring comfort and encourage relaxation. The concept of ‘cocooning’ is evident in these pieces that exude soothing architectural minimalism.

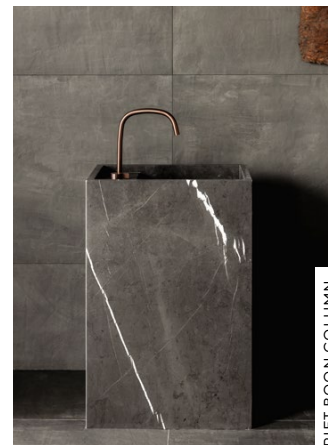
Origin: **The Netherlands**
Offering: **Bathroom**



JP COLUMN



PB 10 SPOUT & PB 01 MIXER



PIET BOON COLUMN



PIET BOON CABINET 180



PIET BOON BASIN 40



PENDULUM WALL SCONCE

CTO LIGHTING

CTO LIGHTING
 CTO Lighting is an exclusive, luxury lighting company; celebrating contemporary design, premium materials and British craftsmanship. The designs illuminate the interiors of iconic landmarks, commercial developments, and prestigious residences around the world. The signature materials of satin brass, bronze, alabaster, mouthblown and handmade glass are combined with design influences from both nature and architecture. The handmade nature of the products results in truly unique lights, which produce a warm, ambient glow, setting a mood of sophistication and elegance.

Origin: **British**
 Offering: **Lighting**



NIMBUS PENDANT



NIMBUS WALL



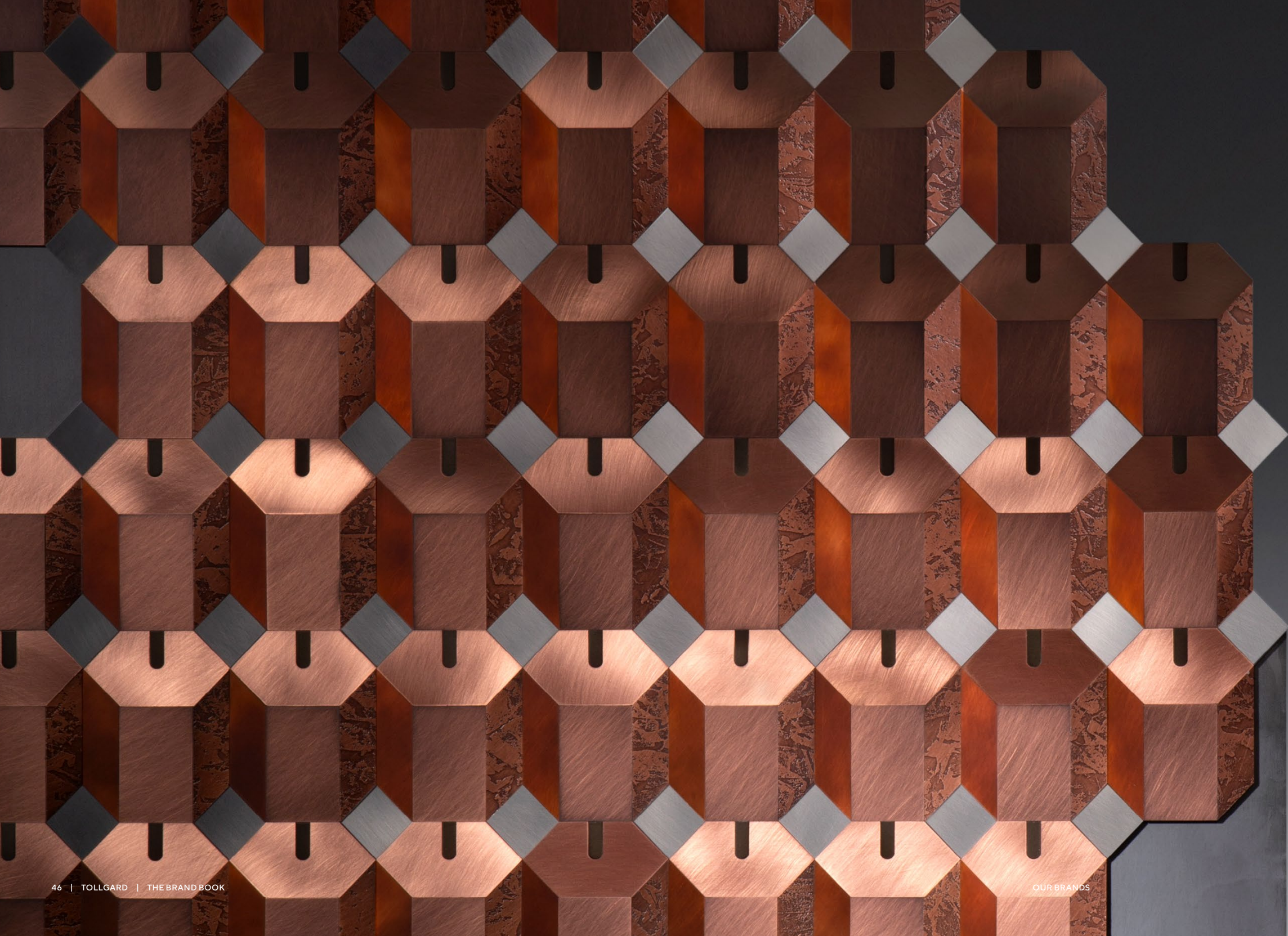
AVALON CHANDELIER



ACROPOLIS



MODULO HORIZONTAL



DE CASTELLI

De Castelli

Founded by Albino Celato, a fourth-generation blacksmith, De Castelli is an Italian firm dedicated to the art of 'hard couture'. By combining age-old techniques with advanced engineering, it pushes metal to its fullest potential, creating modern surfaces, furniture and products. The company has created its own collections of furniture and products in collaboration with some of the world's leading designers, as well as working closely with architects and designers on bespoke commissions.

Origin: Italy
Offering: Furniture | Surfaces



PLATEAUX OF MIRROR



BRAME MIRROR



BETWEEN NATURE



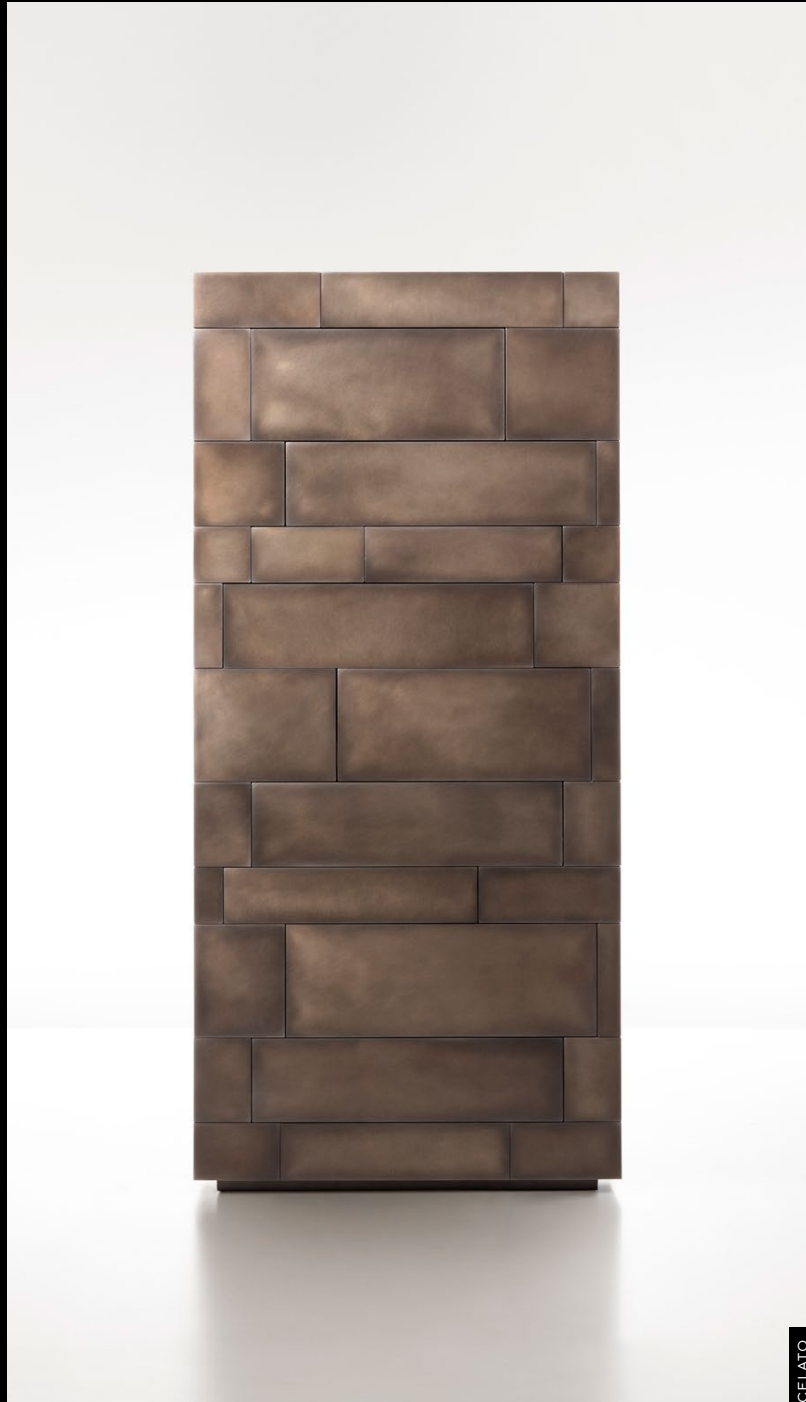
SCULPT CONSOLE



DROPS



NICOLA



GELATO



CURSA LOUNGE CHAIR

DE LA ESPADA

De La Espada

De La Espada works closely with a small number of designers developing significant, enduring partnerships. These collaborations combine leading design with the highest calibre of European craftsmanship. Each of De La Espada designer's vision extends far beyond just a chair or a bed; here, they conceive furniture for an entire home: a place to eat, rest, sleep and work. While each studio has a unique creative narrative, there is a common thread that runs through all De La Espada products, allowing for flexible combinations to achieve truly individualised interiors.

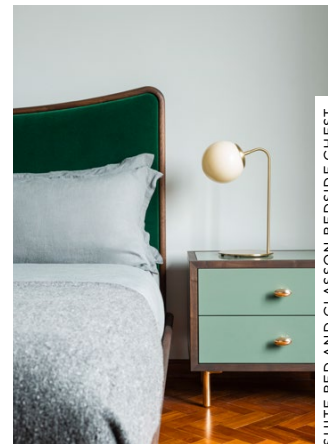
Origin: Portugal
Offering: Furniture



ELLIOT DESK AND CHAIR



PETIT 3 CHAIR



SUITE BED AND CLASSON BEDSIDE CHEST



CAPO LOUNGE CHAIR



ELYSIA ARMCHAIR



eikund

Eikund

Eikund is a furniture maker bringing forgotten classics of Norwegian mid-century design into the spotlight. Its three founders, Morten Hippe, Frode Tingbø and Jørgen Tengesdal have in common a long-held appreciation of Norwegian furniture design. Believing it to have been traditionally overlooked in favour of the better-known Danish mid-century icons, they set out together to correct this, and in 2015, Eikund was born.

Origin: Denmark
Offering: Furniture



BROADWAY LOUNGE CHAIR



VENG ARMCHAIR



KRYSSET LOUNGE CHAIR



HERTUG DINING CHAIR



KRYSSET LOUNGE CHAIR



EDRU PENDANT LAMP DETAIL



ENTRELACS

Entrelacs

Raw and authentic beauty is the trademark of French lighting specialists, Entrelacs. Formed in 1982, this family foundry has grown into a global name through its exceptional bronze work, sculptural design, and exquisite detail. Brothers Yves and Paul Macheret began their journey of design young, working alongside their father to master the art of metal. Craft is part of their DNA, and each design is brought to life with the very best that nature has to offer. Today, they continue to share their father's vision with the world through a contemporary and captivating collection of lighting.

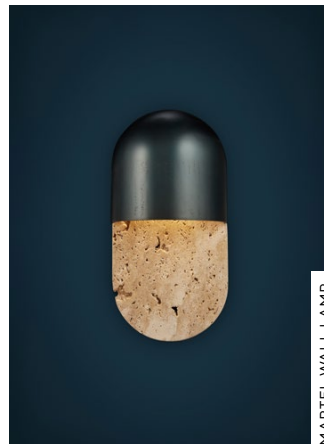
Origin: **France**
 Offering: **Furniture | Lighting**



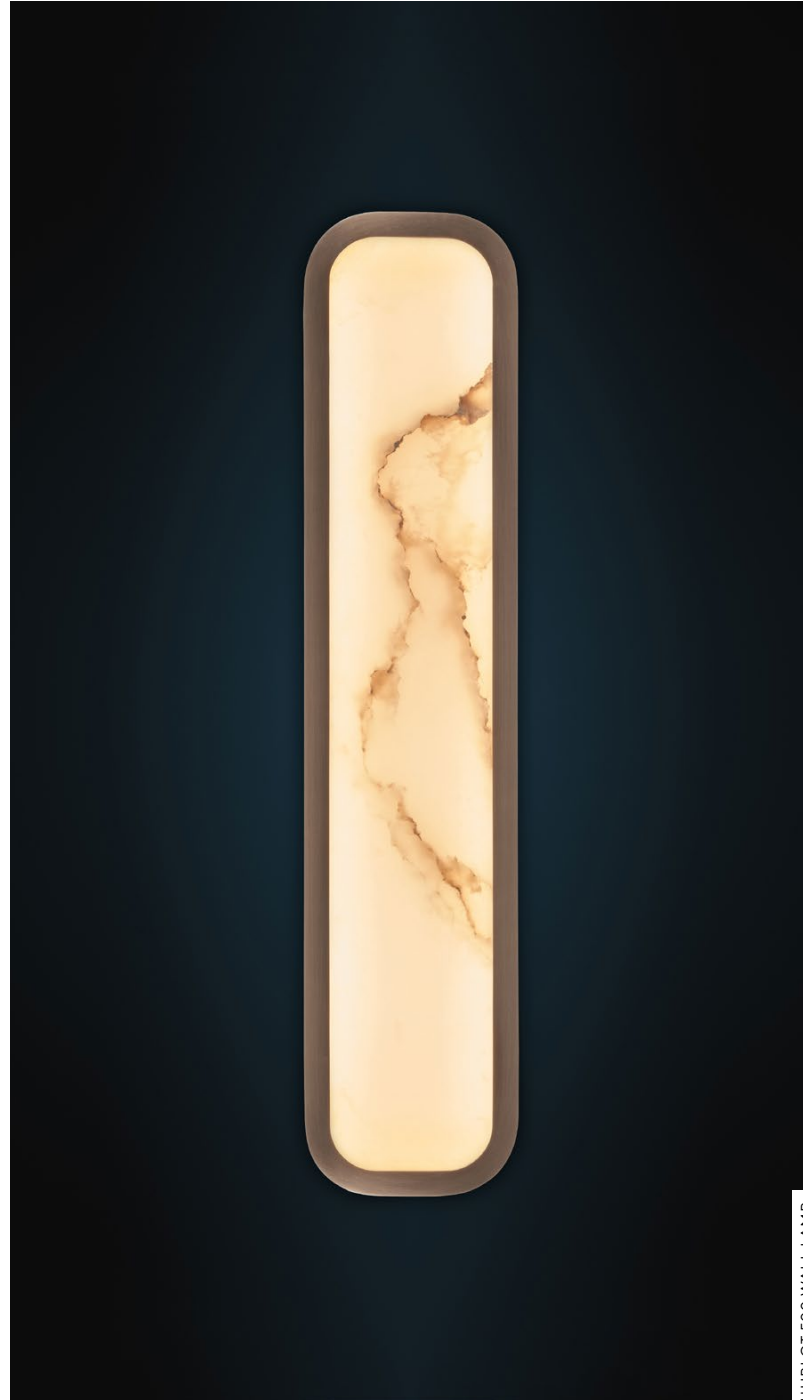
NOMAD 295 TABLE LAMP



HUBLOT 700 PENDANT LAMP



MARTEL WALL LAMP



HUBLOT 500 WALL LAMP



EXTETA

Exteta

Mastering the art of Italian living, fine furniture maker Exteta works to elevate experiences for its clients with exquisite craftsmanship and expertly sourced materials. Creative director, Massimo Castagna offers an alternative perspective with unspoiled hybrid spaces, perfectly balanced interiors that seamlessly flow from inside to outside. With a palette of natural woods, precious stones, polished metals, and tactile fabrics they continue to create timeless works that live up to the illustrious moniker of 'Made in Italy.'

Origin: Italy
Offering: Furniture | Outdoor | Lighting
Kitchens | Accessories



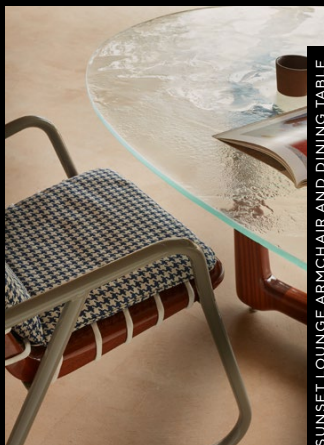
LEVANTE CHAIR AND GIOTTO TABLE



L.PIDC01 | FOLDABLE CHAIR



STONE ROUND COFFEE TABLE



SUNSET LOUNGE ARMCHAIR AND DINING TABLE



PANAREA DORMEUSE AND ISLAND



SUNSET LOUNGE TABLE



CHIEFTAIN CHAIR



48 SOFA BENCH

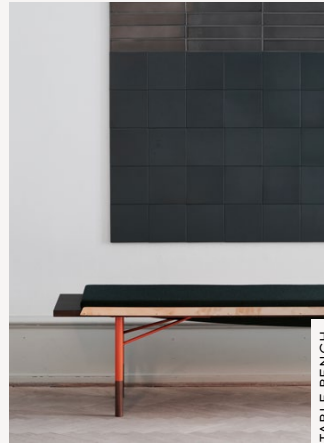


TABLE BENCH



POET SOFA

HOUSE OF FINN JUHL

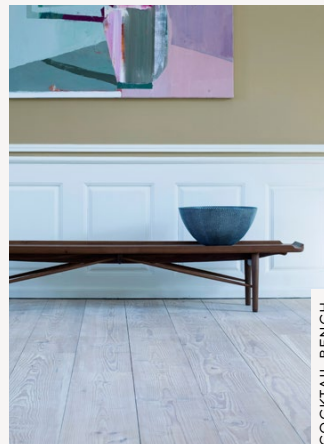
House of Finn Juhl

The 'father of Danish design', Finn Juhl became one of the leading creative figures in the mid-century and is credited with having introduced Danish design to America during the 1950s. Today, the House of Finn Juhl by OneCollection exclusively manufactures his sculptural and iconic furniture, including the celebrated Chieftain Chair. More than 40 of his classic masterpieces are crafted to the most exacting standards, with the utmost respect for their original heritage.

Origin: Denmark
Offering: Furniture



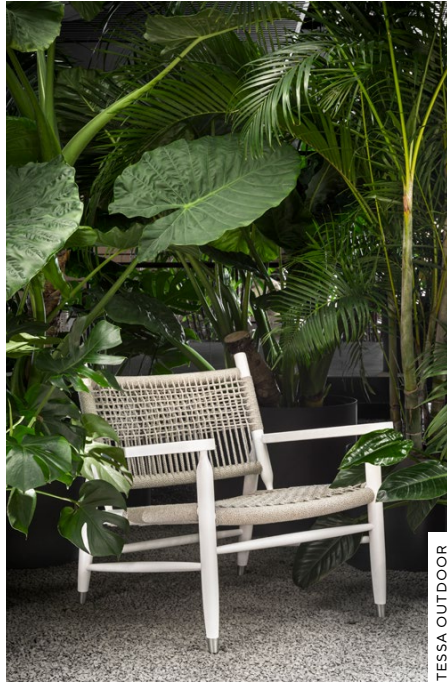
109 CHAIR



COCKTAIL BENCH



BAKER SOFA



TESSA OUTDOOR



ICARO ROUND

FLEXFORM

Flexform

Made in Italy is the signature of iconic furniture maker Flexform. With their 'knowing hand' they bring to life discreetly sophisticated sofas that are globally recognised for their luxurious warmth and lightweight softness. Crafted in Meda, Northern Italy with a legacy of inspiration and expertise, these items respect the architecture of a space. With a strong portfolio of original contemporary designs, Flexform is found in discerning homes as well as prestigious hotels, yachts and restaurants across the globe.

Origin: Italy
Offering: Furniture



ALISON



GROUNDPIECE SOFA



BARDOT STOOL

GABRIEL SCOTT

Gabriel Scott

Gabriel Scott is the brainchild of brothers-in-law Gabriel Kakon and Scott Richler, both experienced in industrial design, architecture and jewellery making. Since 2004, they have made their name bringing their myriad talents to bear on a line of custom-made furniture and lighting pieces. Scott is now at the helm, designing pieces for the world's most prestigious flagship stores, celebrated restaurants, and desirable private residences.

Origin: **Canada**
Offering: **Lighting | Furniture**



HARLOW DRIED FLOWERS



BRIOLLETTE SMALL PENDANT



LUNA CHANDELIER



MYRIAD LONG CHANDELIER



HUMBLE SOFA DETAIL

gemla

Gemla
 Sweden's oldest furniture maker, Gemla, confidently presents a collection of furniture that feels rooted in tradition but not trapped by it. Their workshop can be found in the small village of Diö by the river Helgeå, surrounded by beech forests. Inside, they have spent the last 160 years learning the language of wood, refining their craft and their mastery of it. From elegant armchairs to hockey sticks and tennis rackets, their portfolio can simply be defined as evocative, timeless, and beautifully made.

Origin: **Sweden**
 Offering: **Furniture**



GEMLA OPEN



HUMBLE ARMCHAIR



STAM TABLE WITH VILDA DINING CHAIR



STILLA DINING TABLE WITH VILDA DINING CHAIR



BOLLE FROSTED

Giopato & Coombes

Giopatto and Coombes
 Founded by Italian-English duo Cristiana Giopato and Christopher Coombes, Giopato & Coombes is a lighting design company founded in 2014 that fuses the finest Italian craftsmanship with cutting-edge technological advances. Passionate innovators who are pushing the boundaries of lighting design, Giopato & Coombes' work is informed by Murano's rich glass-blowing heritage but looks ahead to the future through its discreet and intelligent use of modern technology.

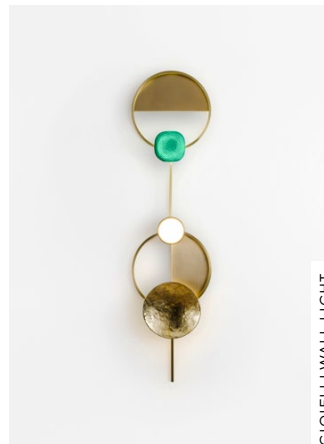
Origin: **Italy**
 Offering: **Lighting**



BOLLE TRANSPARENT



SOFTSPOT



GIOIELLI WALL LIGHT



GEM SUSPENSION LAMP



JANET ARMCHAIRS

GIORGETTI 

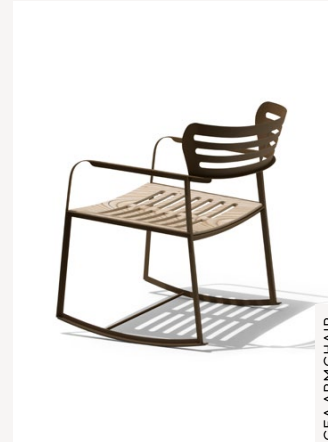
Giorgetti

Since 1898, Giorgetti has been crafting furniture collections of the very finest quality from its home in Brianza, Italy. It has since grown to become one of the most revered names in fine furniture design; with pieces instantly recognisable all over the world for their distinctive style. For more than 120 years, Giorgetti has set the standard for the art of woodworking. Producing sublime contemporary furniture, shaped from the most beautiful cuts of wood and crafted by highly skilled woodworkers celebrating heritage and innovation.

Origin: **Italy**
 Offering: **Furniture | Lighting**



ODE BARSTOOLS



GEA ARMCHAIR



LOOP ARMCHAIR



ELISA DINING CHAIR AND GORDON ROUND TABLE



HENGE®

Henge

Unique pieces are the love language of Italian atelier Henge. Artistic director Massimo Castagna brings together the renowned creative talents of Ugo Cacciatori and Yabu Pushelberg to create a collection of furniture, accessories and lighting that is truly mesmerising. The natural materials they use to create these organic sculptures are as globally diverse as the schemes they finally inhabit.

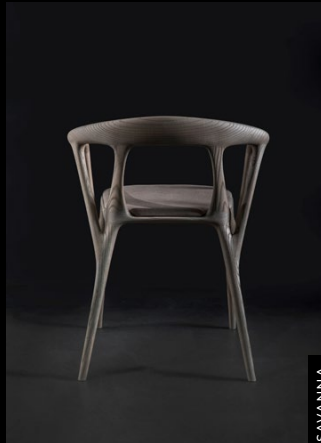
Origin: Italy
Offering: Furniture | Lighting | Accessories



ZENITH TABLE STONE



TEST-TWO



SAVANNA



DOWNTOWN SOFA



TEST-ONE



SUPERB-ALL



MONOLITH TABLE



INDIGENUS

Indigenus
Founded by South African Peter Van Der Post, Indigenus crafts a unique collection of architectural pots and planters; sculptural pieces of outdoor art that have the power to transform gardens, rooftops, and terraces. Each of Indigenus' creations is meticulously crafted—smooth, clean lines are drawn from raw, honest materials of hardwood, cork, and concrete. A recognisable aesthetic runs through each collection. Strikingly pared-back and restrained designs feature bold, simple silhouettes contrasted by tactility and earthiness.

Origin: South Africa
Offering: Outdoor Accessories



AARDE



BHACA



TUBER



AARDE



TUBER



JUNIPER®

Juniper

Based in New York, Juniper is an award-winning, fully integrated manufacturing and design studio dedicated to creating upscale, architectural lighting for homes, offices, and hospitality spaces. With an unwavering belief in the transformative power of good design, Juniper creates lighting designs that are strikingly simple aesthetically, yet are integrated with innovative, problem-solving technology. Meticulous engineering and considered design is concealed within beautifully crafted natural materials.

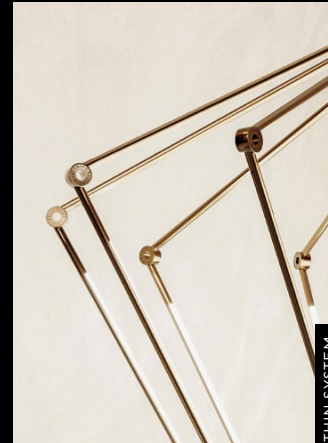
Origin: USA
Offering: Lighting



AXIS



MULTIVERSE



THIN SYSTEM



METROPOLIS WALL-TO-WALL



THIN SYSTEM



METROPOLIS



501 ALOUETTE CHAIR



KBH SOFA

KØBENHAVNS-MØBELSNEDKERI

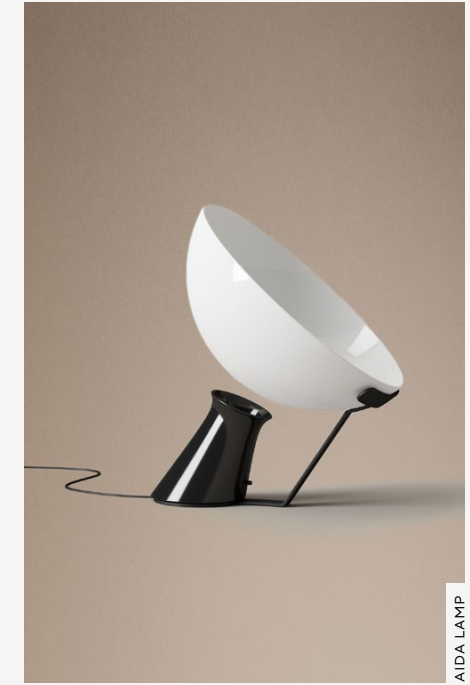
KBH

KBH—Københavns Møbelsnedkeri—is a Copenhagen-based company committed to the craft of handmade interiors. Since 2006, it has produced furniture, kitchens, wardrobes and bathrooms for both private and corporate customers the world over. From concept to completion, every single product is designed and made in Copenhagen by hand. KBH's products are recognisable for their timeless beauty; a finely balanced interplay between colours, materials and tactility.

Origin: Denmark
Offering: Furniture | Lighting



BODIL KJAER OFFICE DESK



AIDA LAMP

Karakter

Karakter

Karakter Copenhagen is a Danish design brand specialising in the production of furniture and lighting by design icons of the past, present and future. With an uncompromising commitment to quality and finish with a focus on enduring, timeless design—the brand draws together a collection of beautifully crafted forever pieces. Icons of 20th-century like Joe Colombo, Angelo Mangiarotti and Achille Castiglioni are celebrated alongside promising new design talents like Laura Straßer, Aldo Bakker and Anatomy Design.

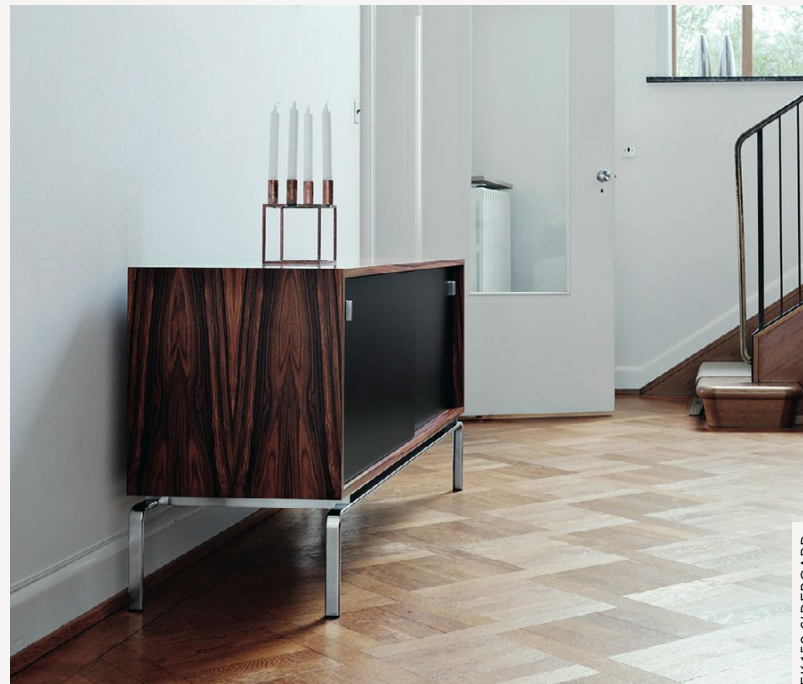
Origin: Denmark
Offering: Furniture | Lighting | Accessories



FK 6720 EASY CHAIR



FK 87 GRASSHOPPER



FK 150 SIDEBOARD



OAZE SOFA



INTERSECTION CHAIR AND DINING TABLE



Lange

Founder, Henrik Lange created his eponymous line, Lange Production in 2006 but his love story with Danish design began many decades prior. He fell for the definitive forms, elevated function, and peaceful minimalism of the 1960s. A fascination with icons like Fabricius & Kastholm and Grete Jalk sparked a need to bridge the past with the future by sharing these functional sculptures with the world. Each of their subsequent works is a celebration of form, function, and finish. Transcending trends and the curse of the obsolete in favour of the everlasting.

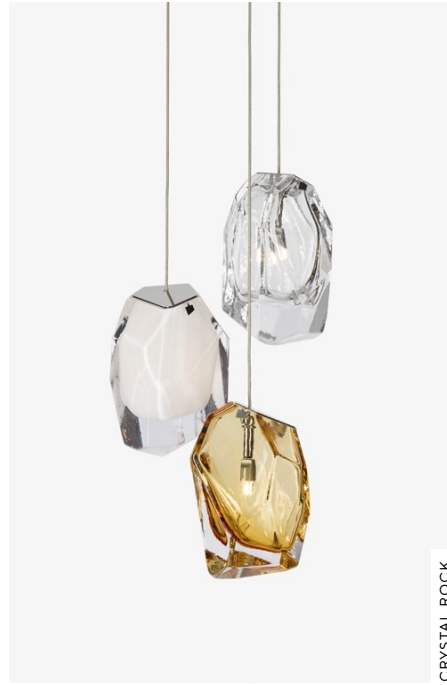
Origin: **Denmark**
Offering: **Furniture**

LA MANUFACTURE

La Manufacture

The worlds of French style and Italian craft collide at La Manufacture. With art director Luca Ninchetto at the helm, this multi-disciplinary brand brings to light the best of both realms. Delectable designs of furniture, lighting, and accessories, rich in colour and character. La Manufacture brings together the best designers from across the globe with a design manifesto that seeks to find the *je ne sais quoi* in everything from furniture to fashion.

Origin: **France**
Offering: **Furniture | Accessories**



CRYSTAL ROCK

LASVIT

Lasvit

Founded by Leon Jakimič, a sixth-generation glassmaker, Lasvit is a Czech business that fuses traditional Bohemian glassmaking techniques with cutting-edge technology and contemporary design to create extraordinary experiences in light. With a deeply held reverence for the glassmaking traditions of Bohemia and generations of his family before him, Leon Jakimič brings a modern approach to his work. Passionate about innovation, he brings together cutting-edge technology with the know-how of highly skilled craftspeople. The result is a breath-taking repertoire of lighting installations and fixtures alongside a range of stunning home decor.

Origin: Czech Republic
Offering: Lighting | Accessories



CONSTELLATION | FLOR LAMP



CONSTELLATION | CASSIOPEA CEILING SCENCE



NIGHTBLOOM TABLE LAMP



EMBRACED

LLADRÓ

Lladró

In 1953, three brothers Juan, José and Vicente Lladró embarked on an adventure into the world of porcelain. As they learned the language of this beautiful material, they created Lladró. Synonymous with creativity, style, and hand-crafted quality, they have grown their eponymous venture into a global name in the ceramics space. With each new creation, they sought to challenge the laws of gravity and reinvent themselves.

Origin: Spain
Offering: Lighting | Accessories



BEA CHAIR AND BULÉ DINING TABLE

LEMA

Lema
 Lema's journey began in 1930 when Angelo Meroni—the grandfather and namesake of the current President—opened a workshop in the heart of Brianza, immersed in the production of artisanal Italian furniture. With a strong tradition of craftsmanship and an unwavering focus on quality, Lema realises the designs of some of the most inspiring names in furniture design. Though Lema's family of design partners is varied, every piece is linked to the next by a common thread: comfort, the philosophy of slow living and the harmony of an interior.

Origin: **Italy**
 Offering: **Furniture**



SERYASSE WARDROBE



ALTON ARMCHAIR



DANDY WARDROBE



TAIKI ARMCHAIR



NEIL SOFA



LINTELOO

Linteloo
Linteloo was founded by Dutch designer Jan te Linteloo in 1993, inspired by 'the feel-good factor', sofas and chairs that were inherently comfortable and relaxed. Each piece of Linteloo furniture is unique: exceptionally designed and painstakingly crafted. Yet the Linteloo collections are united by their shared appreciation of easy living. Relaxed silhouettes are finished in crumpled linens with sink-in softness, and just the right balance is struck between comfort and structured support.

Origin: The Netherlands
Offering: Furniture | Lighting



BOLD ISLAND SOFA



CUBO FLOOR LAMP



OISEAU DINING CHAIR AND TABLE



TILT ARMCHAIR AND OTTOMAN



CERVINO ARMCHAIR



ARP SOFA WITH ISOLA COFFEE TABLE

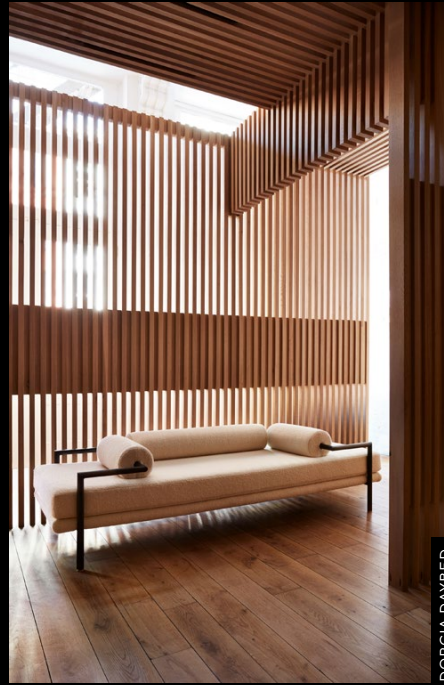


LUTECA

FURNITURE

Luteca
Beautifully embracing the rich heritage of Latin America and Mexico, Luteca specialises in contemporary and modernist design. Founded in New York, 2015 by Amanda Réant, Sebastian Réant and industrial designer Alexander Diaz Andersson, the brand is the first to showcase timeless and handcrafted Mexican design to an international audience. Sustainably produced in Mexico with talented craftsmen, artisan techniques and natural materials, these pieces radiate an architectural warmth that captures the senses.

Origin: **USA & Mexico**
Offering: **Furniture | Outdoor Furniture**



DORCIA DAYBED



OCO SIDE TABLE



EUGENIO DINING CHAIR



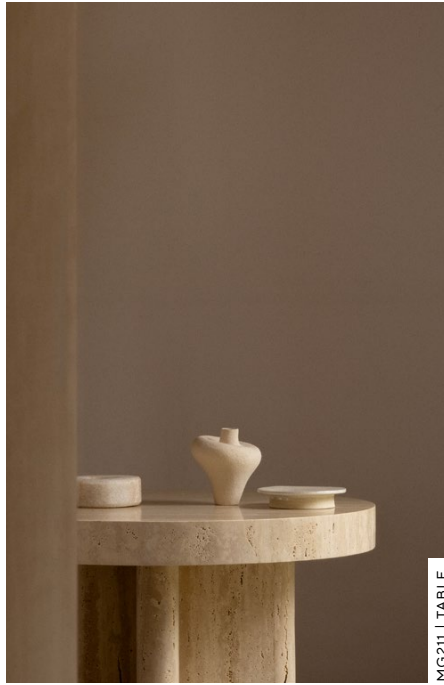
WOVEN CREDENZA



LINE LOUNGE CHAIR



CP003 COFFEE TABLE



MG211 | TABLE



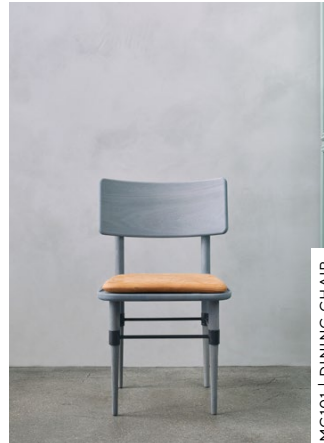
Malte Gormsen Kollektion

Honouring the beauty of Denmark's plentiful forests, Malte Gormsen started his eponymous company with an aim to bring to life cabinetry and furniture that stands the test of time. From his workshop in Herlev just outside Copenhagen, Malte's team meticulously sources each piece of wood to imbue a sense of spirit. From exquisite furniture and intricate accessories, their portfolio of future heirlooms is a wonder to behold.

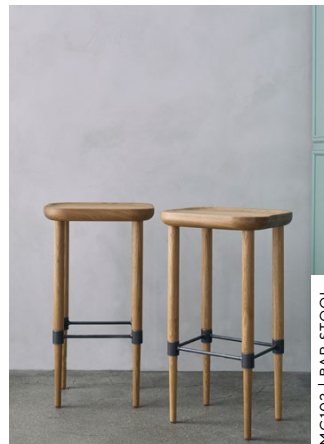
Origin: **Denmark**
 Offering: **Furniture | Accessories**



MG210 | DINING TABLE



MG101 | DINING CHAIR



MG102 | BAR STOOL



MG406 | SIDE TABLE



CASCADIA PENDANTS

 MATTHEW McCORMICK

Matthew McCormick
 Founded in 2013 by Canadian Matthew McCormick, the studio designs and manufactures a distinctive collection of lighting and artistic installations. They achieve a fine balance between traditional hand-crafting techniques and modern technology, producing a collection of chandeliers and pendants that marry supreme functionality with an elegant, striking design. Sculptural forms are realised in precious metals and blown glass, imbuing each piece with an air of refinement and a creative art-like quality.

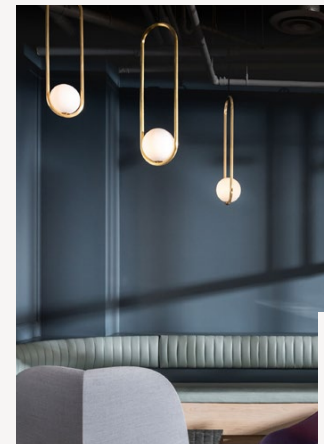
Origin: **Canada**
 Offering: **Lighting**



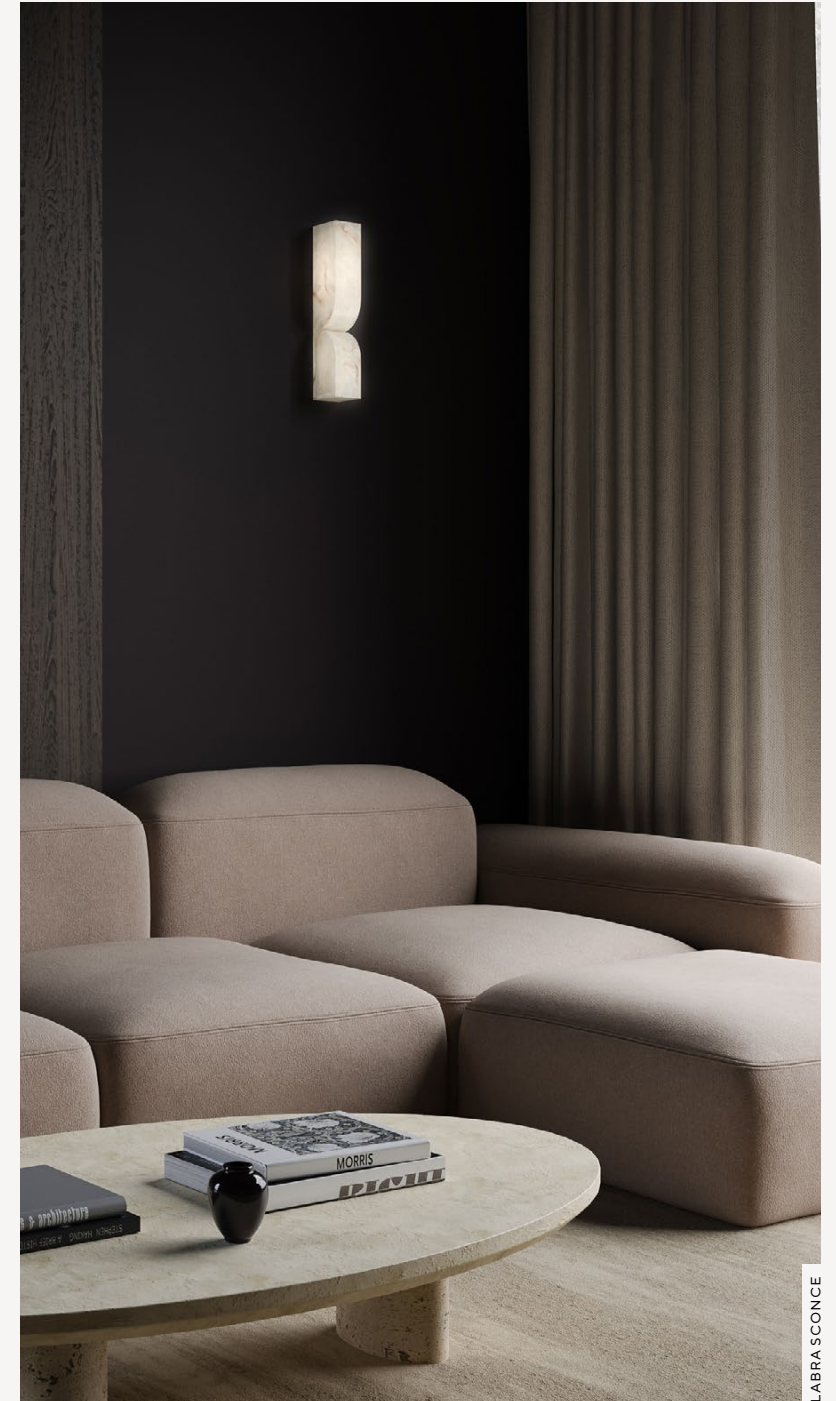
CASCADIA PENDANTS



HALO PENDANT



MILA PENDANT



LABRA SCONCE



MERNØE

Mernøe
Carefully crafted lighting with a contemporary edge, Mernøe is a family business based in Copenhagen. Each of their hand-made pieces is created with the finest wood, brass and glass. They aim to emphasize the natural beauty of these materials whilst creating innovative and exciting modern sculptures. From desirable private residences to grand public spaces, Mernøe's work inspires and engages.

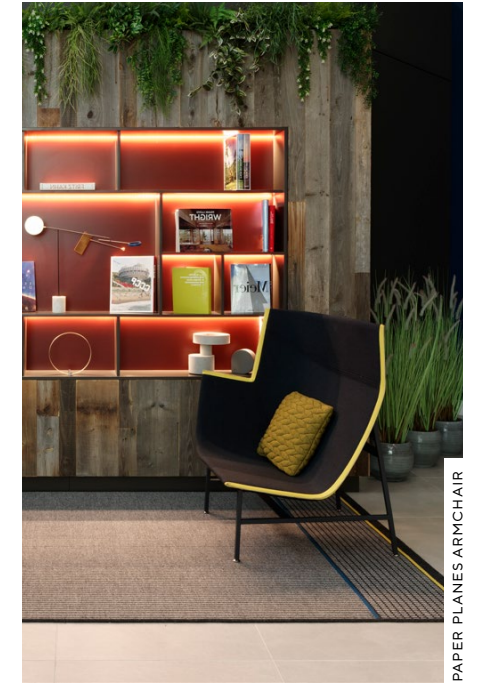
Origin: **Denmark**
Offering: **Lighting**



NO.1, SIPO MAHOGANY



GOGAN SOFA



PAPER PLANES ARMCHAIR

MOROSO™

the beauty of design

Moroso
Since its foundation in 1952, Moroso has been a family run business that brings together the finest Italian furniture-making with some of the world's leading names in architecture and design. The cornerstone of the brand since its inception has been the manufacture of beautifully elegant, luxurious sofas and seating. With decades of experience, Moroso has honed its craft to unmatched levels and today produces some of the finest quality furniture in the world.

Origin: **Italy**
Offering: **Furniture**



MAN OF PARTS

Man of Parts
Founded by design aficionado Stephan Weishaupt, Man of Parts intends to reflect the attitudes of its customers: global citizens for whom travel and exploration is a way of life. Hailing from Munich and a long line of craftspeople, entrepreneurs, architects and artists, Stephan's philosophy centres around the notion that we need few items but what we do have should be beautifully made and enhance the way we live. In collaboration with a close group of design partners, he has created a capsule collection of seating, tables, lighting, and accessories to improve time spent at home.

Origin: **Canada**
Offering: **Furniture | Lighting | Accessories**



SAVIGNYPLATZ DINING



VIA DEL CORSO



JINBAO STREET



PARK PLACE STOOL



SYLVIE DINING CHAIR

MERIDIANI

Meridiani

Meridiani's collections are characterised by their timelessness; informed by the past, they interpret the demands of contemporary lifestyles to create eminently liveable furnishings for today. Unique to Meridiani is its unparalleled collection of textiles; Meridiani designs and manufactures its own range of exquisite fabrics in the finest natural materials: linen, cotton, velvet, and chenille. Hand-crafted furniture for the living room, bedroom, dining area, library and outdoors is all made entirely in Italy. These exceptional pieces of design are the future heirlooms of generations to come.

Origin: Italy
Offering: Furniture



ISETTA CHAIR



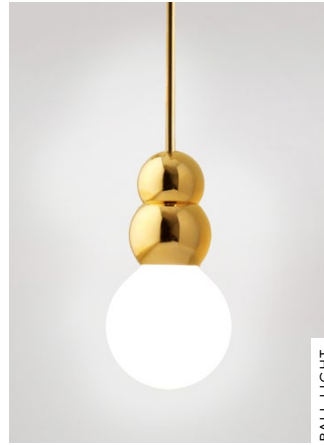
TIMOTHY SOFA



WHITE PORCELAIN D2



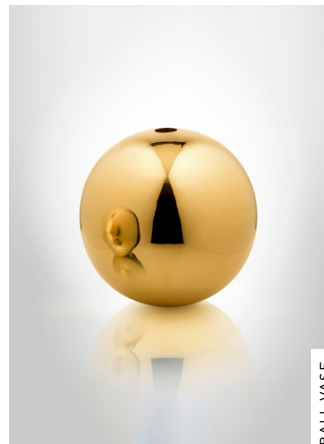
HAPPY TOGETHER PENDANT



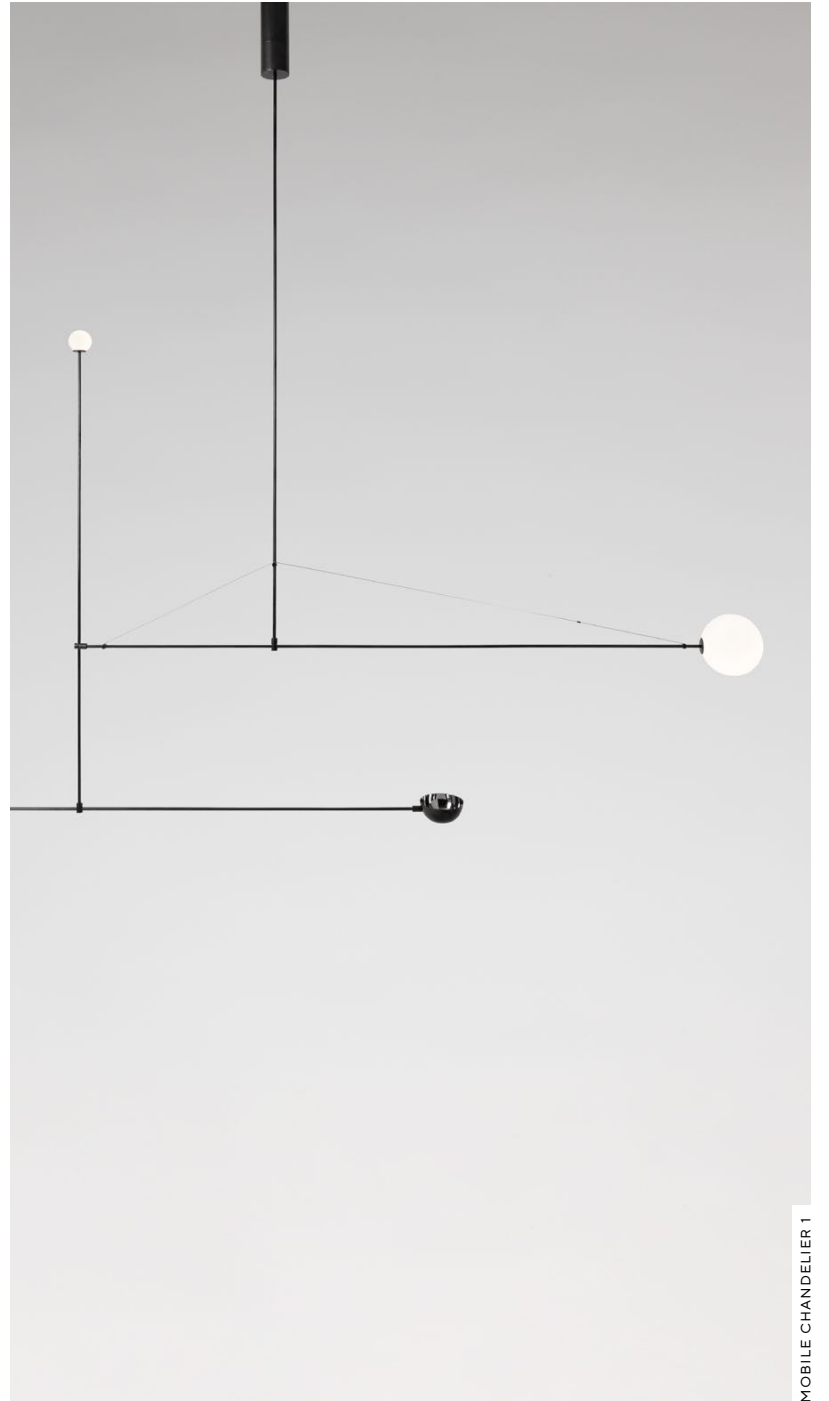
BALL LIGHT



GET SET



BALL VASE



MOBILE CHANDELIER 1

MICHAEL ANASTASSIADES

Michael Anastassiades

Michael Anastassiades is a London-based company specialising in the design and manufacturing of high-quality lighting and objects. Positioned between fine art and design, Michael's work aims to provoke dialogue, participation and interaction. He creates objects that are minimal, utilitarian and almost mundane, yet full of a vitality one might not expect. His designs are hand-made by family-run workshops, selected for their unique manufacturing skills and traditional use of materials, in line with Michael's philosophy to produce exceptionally designed objects of permanent value.

Origin: **United Kingdom**
Offering: **Lighting**



YOELL ARMCHAIR & 505 UP SYSTEM

Molteni & C

Molteni & C

Since its inception in 1934, some of the most celebrated names in design have worked with Molteni & C to create its collections, including Werner Blaser, Afra and Tobia Scarpa, Gio Ponti and Patricia Urquiola. Today, under the creative directorship of Belgian architect and designer Vincent van Duysen, the brand continues to be a leading industry name and a byword for quality Italian furniture. Its collections include both heritage and contemporary pieces. Their textile collections include designs by Marta Ferri, and furniture ranging from seating and dining tables to walk-in closets and home offices.

Origin: **Italy**
Offering: **Furniture**



BLEVIO DINING TABLE



DEVON STOOL



D.156.3 ARMCHAIR



CAMDEN HIGH BACK SOFA



AVA DINING TABLE & CHELSEA DINING CHAIR



PARLIAMENT

NEMO

Nemo

Since its foundation in 1993 by Franco Cassina, Nemo has earned a global reputation for manufacturing iconic lighting. From its base in Milan, Nemo reproduces lighting by some of the 20th-century's most innovative and celebrated designers, from Le Corbusier to Kazuhide Takahama. Through collaboration with contemporary designers, the company seeks to develop the future lighting icons of tomorrow. From the likes of Mario Bellini, Jean Nouvel and Andrea Branzi to Bernhard Osann and Arihiro Miyake.

Origin: **Italy**
Offering: **Lighting**



MINI POTENCE PIVOTANTE



ZIRKOL SUSPENSION LAMP



MITO LINEAR PENDANTS

Occhio

Occhio

Self-taught lighting designer Axel Meise founded Occhio in 1999 in his native Munich. His vision was to enable others to design their own homes: to democratise the design process. His belief is that good lighting delivers a good quality of life, and he has dedicated himself to pioneering new and better ways of lighting the spaces we live in. Occhio's signature is modular lighting systems. Simply and consistently designed, they connect spaces and enable uniform lighting designs to be used throughout entire buildings, creating a sense of openness and flow.

Origin: **Germany**
Offering: **Lighting**



MITO SOSPESO



MAXX



FRANK DINER

OKHA

OKHA

Hailing from Cape Town, OKHA is a brand that embodies South Africa's artisanal history and unrivalled beauty. Founder Adam Court sees each piece he creates as blurring the line between art and design. Collaborating with South Africa's finest artists and artisans, OKHA turns to organic materials—brass, leather, copper, timber, wool, marble and stone - to yield graceful forms: contemporary furniture that respects the natural world and speaks of traditional craftsmanship.

Origin: South Africa
Offering: Furniture



REPOSE SOFA



TETRA



COUNCIL CHAIR



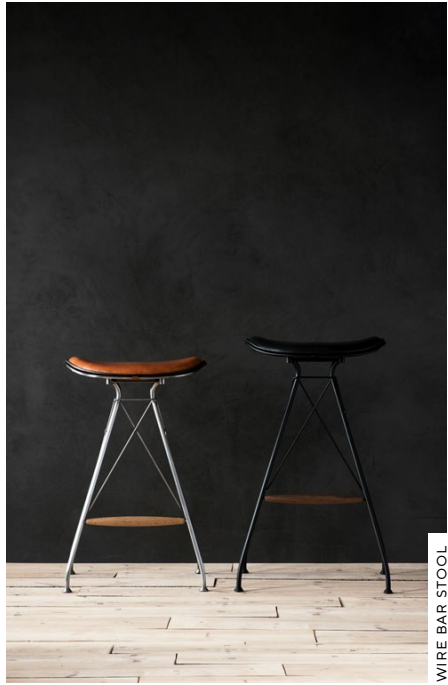
TIME CHAIR

ONECOLLECTION

OneCollection

OneCollection was founded over 30 years ago by Ivan Hansen and Henrik Sørensen. Since 1990, the business has collaborated with some of the most promising contemporary designers to manufacture quality furniture using the most skilled techniques. In 2001, OneCollection was trusted with the exclusive rights to manufacture and re-launch the repertoire of Finn Juhl's sculptural and iconic furniture.

Origin: Denmark
Offering: Furniture



WIRE BAR STOOL

OVERGAARD & DYRMAN

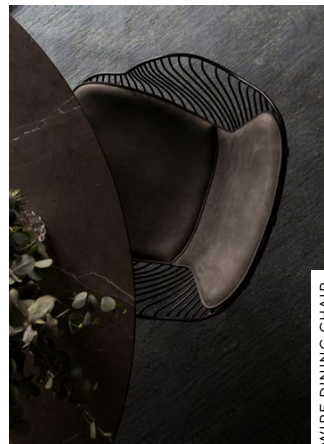
Overgaard & Dyrman

Founded by friends in 2013, Overgaard & Dyrman is a contemporary design studio and furniture maker based in Denmark. Taking the best from past and present, the studio marries traditional techniques with modern technologies to craft organic shapes in luxury materials. Often informed by geometry and the forms found in nature, Overgaard & Dyrman's collection of seating and tables is crafted by skilled artisans in Denmark, with a quality and attention to detail that is intended to inspire and delight.

Origin: **Denmark**
Offering: **Furniture**



CIRCLE DINING CHAIR



WIRE DINING CHAIR



WIRE LOUNGE SOFA



WIRE COFFEE TABLE



PIETBOON

Piet Boon

The Piet Boon Collection offers authentic signature pieces that embody the design philosophy and essence of the company: functional, comfortable, and timeless design. Each piece is passionately crafted with rich natural materials, attention to detail and refined taste, bearing both aesthetics and intensive use in mind. The collection's products are known for their innovative design, sophisticated and everlasting appeal, generous proportions, functional use and extraordinary comfort.

Origin: The Netherlands

Offering: Furniture



LARS COUCH



BOB ARMCHAIR



RENS SOFA



LARS ARMCHAIR



ELLA ARMCHAIR



KOBE COFFEE TABLE



EKERØ COFFEE TABLE

porada

Porada

A byword for Italian excellence, Porada is rooted in materiality. Born in 1948 from a love of wood, their design language encompasses the finest walnut, ash, and oak alongside precious stones, oxidised metals, and lacquered elements. Their product portfolio is a showcase of refined elegance; their strength stemming from a human factor that lies beyond machinery and materials. The most recent collection by Tollgård & Castellani is rooted in the belief that great furniture design is like sculpture for the home.

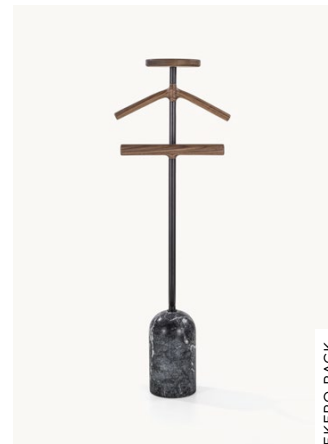
Origin: Italy
Offering: Furniture | Lighting



SERENA DINING CHAIR



EKERØ MIRROR



EKERØ RACK



ASTRA SUSPENSION LAMP



PP225 THE FLAG HALYARD CHAIR



PP Møbler

Family owned and established in 1953, PP Møbler has dedicated itself to the production of the very finest quality furniture for the past 68 years. With a deep-rooted love of wood and a firm belief that technique, ingenuity and craftsmanship can exist side-by-side, PP Møbler uses traditional woodworking techniques and expertise to breathe life into the designs of some of the world's most influential talents, including Hans Wegner, Thomas Alken, Søren Ulrik Petersen, Zaha Hadid and Jørgen Høj.

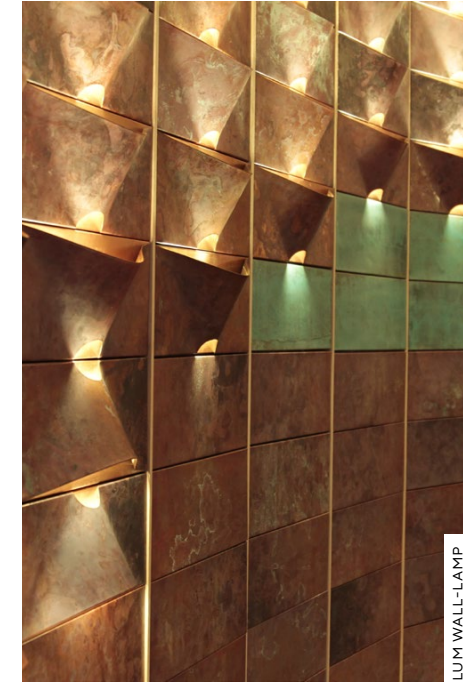
Origin: **Denmark**
Offering: **Furniture**



PP501 THE CHAIR



SPY CHANDELIER



LUM WALL-LAMP



Quasar Holland

Dutch masters of light, Quasar Holland was founded by Teun van Gammeren in 1992. Today, the company is led by his sons Arjens & John who continue to work with renowned designers around the globe including Jan Pauwels, Ralph Frickel, Edward van Vliet and Malika Novi. A showcase of the best contemporary lighting, their collection includes timeless designs that are effortlessly modern. Intricate and illuminating structures make up the brand's distinctive signature.

Origin: **The Netherlands**
Offering: **Lighting**



RBW

RBW is an award-winning, Brooklyn-based, independent design and manufacturing studio that believes in the ability of light to shape and enhance our sense of well-being. With a collection of luminaires that includes ceiling pendants, chandeliers and flush fixtures, wall sconces and outdoor solutions, RBW is helping to bring warm, energy-efficient LED lighting to more public and private spaces all over the world.

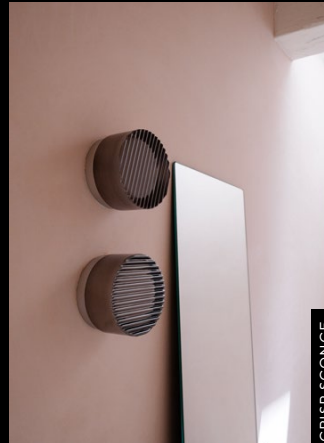
Origin: USA
Offering: Lighting



LATIS SQUARE



HOIST PENDANT



CRISP SCENCE



ALLSEW, GALA 42" & 72"



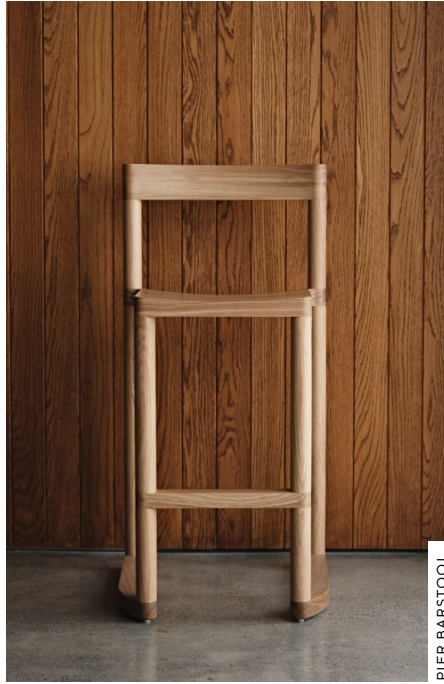
HOIST SCENCE



PASTILLE 3 VANITY & CLUSTER



LATIS CROSS



PIER BARSTOOL

Resident

Resident

Founded by Simon James & Scott Bridgens in 2011, Resident is a New Zealand-based collection offering furniture and lighting that is rooted in innovation and sustainability. They form part of the 'New World Luxury' movement, a collection of brands from the Southern Hemisphere rooted in sustainable design. They focus on pieces that are made to last and enhance every day, a departure from the material attitudes of the past. Seamlessly working across high-end residential and commercial projects, Resident's portfolio offers quiet refinement and a contemporary edge.

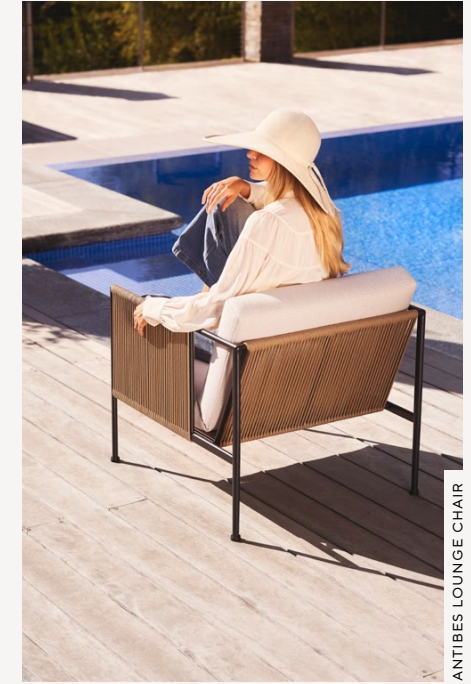
Origin: **New Zealand**
 Offering: **Furniture | Lighting**



OFFSET DINING TABLE AND STOOL



OPEN KITCHEN



ANTIBES LOUNGE CHAIR

RÖSHULTS

Röshults

Röshults is a Swedish design brand that specialises in outdoor living: stylish, contemporary, high-quality kitchens and furniture that embrace the great outdoors. Röshults' story began with a single product: a fire basket built by one of the founders' fathers, Anders Norgren, for his own cottage in Röshults, Småland. It inspired a complete collection of outdoor designs that embrace the Swedish idea of 'the good life'. Well-made, timeless, architectural design that connects families and friends to the spaces around them.

Origin: **Denmark**
 Offering: **Outdoor Furniture | Kitchens**



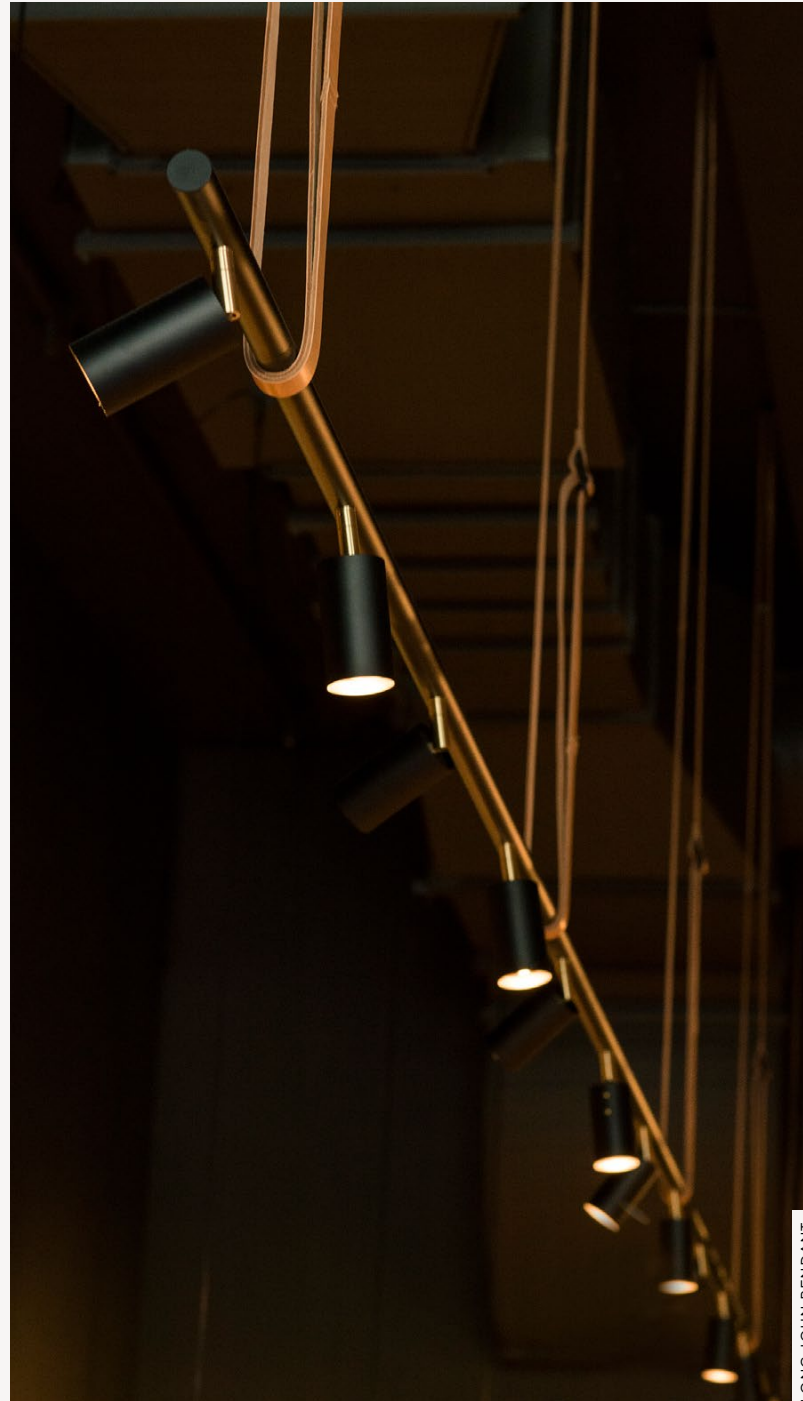
MILLER WALL SCONCE

Rubn

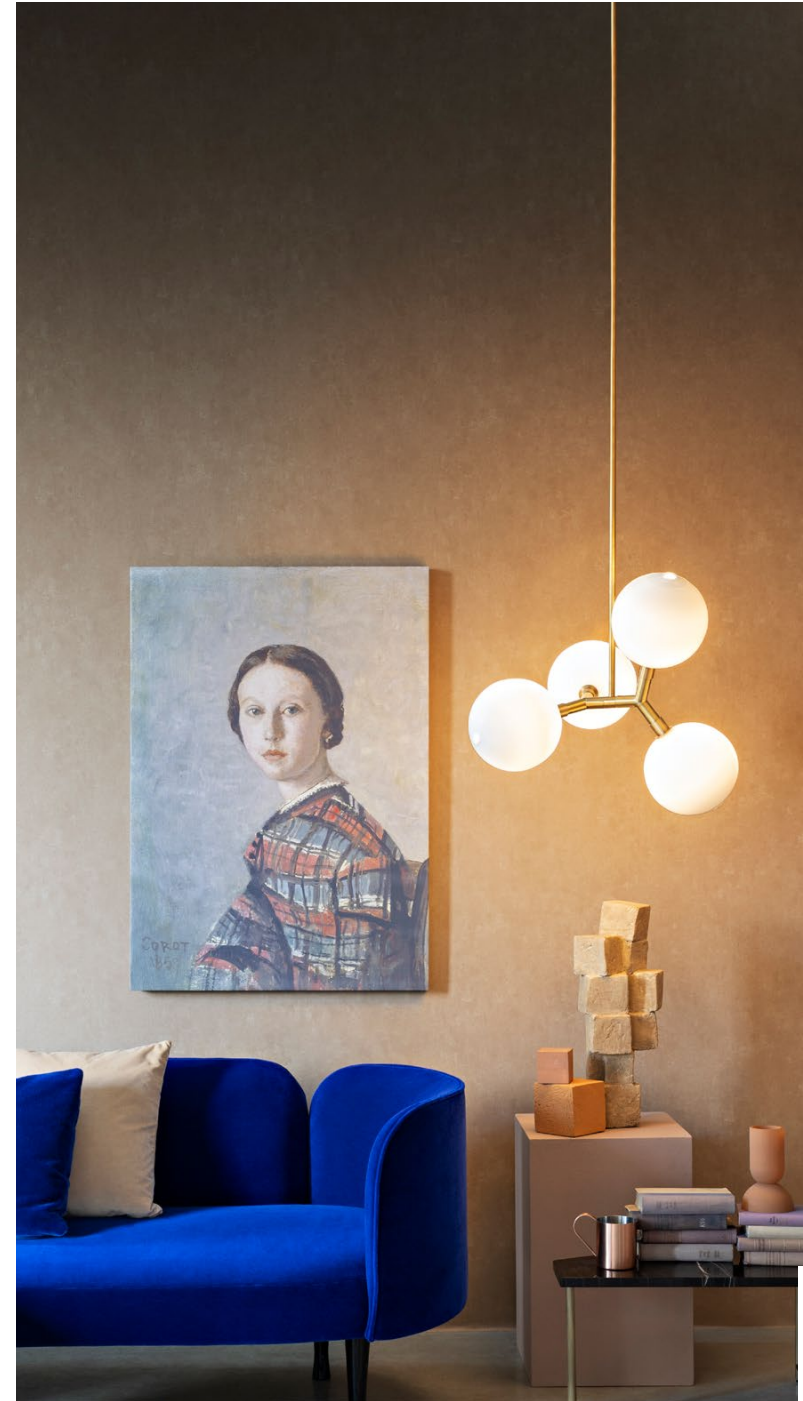
Rubn

Swedish lighting brand Rubn was founded by Niclas Hoflin, centred around his belief that everything is connected; people, objects and ideas must all work as a cohesive whole. Hoflin builds contemporary lighting solutions that persist, both in terms of their aesthetic and the materials used. Their beauty is in their simplicity, which is timeless and enduring. All of Rubn's lighting designs are made in Sweden, from the design stage through to the finishing touches of production.

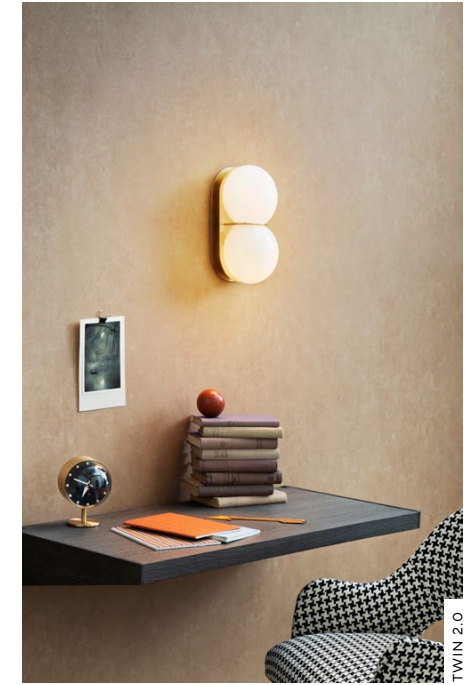
Origin: Sweden
Offering: Lighting



LONG JOHN PENDANT



VEER PENDANT



TWIN 2.0

SKLO

SKLO

SkLO is a celebration of the traditional art of Czech glassblowing, made modern. Its name, which is Czech for 'glass', is symbolic of the brand's philosophy: simplicity, restraint, and a deep focus on its craft. Designed and made between California and the Czech Republic, SkLO's designs are distinctly modern, eschewing ostentatious or aesthetic embellishment in favour of understated simplicity. SkLO's mantra is to find the purest expression of an idea, and to realise it through extraordinary workmanship.

Origin: USA & Czech Republic
Offering: Lighting | Accessories



skram

Skram
Skram describes its furniture, lighting and accessories as a 'distillation of the essential', working in sustainably sourced North American hardwood and other natural materials such as metal, veneer, leather and stone. Its collections are restrained, minimal and elegant. In the making process, natural imperfections in the raw materials are cherished and preserved to distil a sense of individual character to each piece; the beauty of the natural world is brought together with extraordinary precision and artisanal craftsmanship.

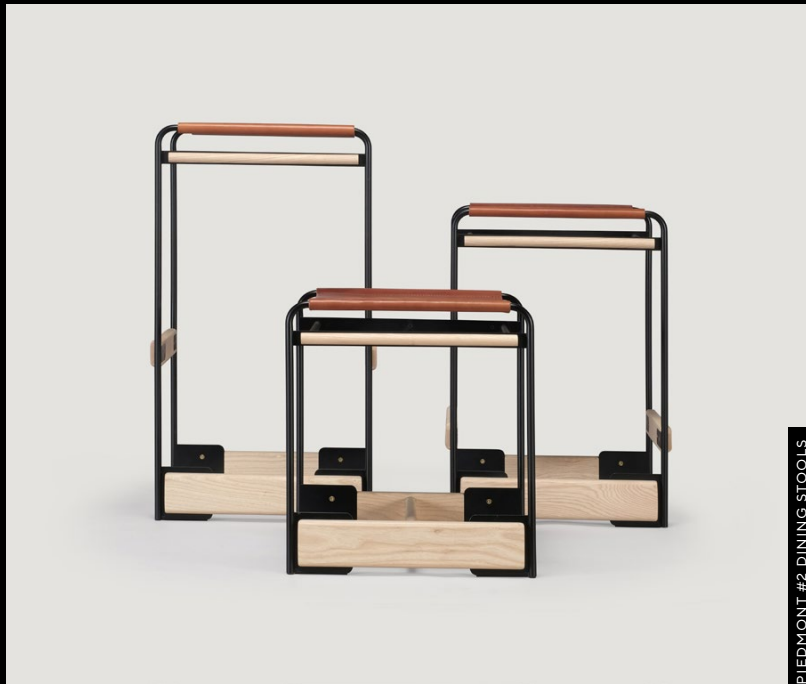
Origin: USA
Offering: Furniture | Lighting | Accessories



PIEDMONT PEDESTAL TABLE



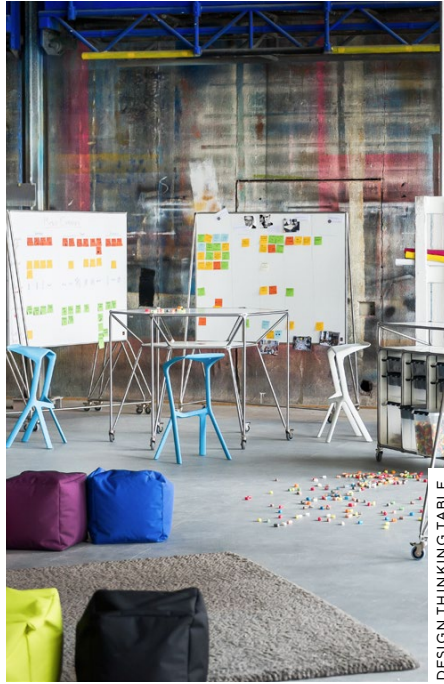
PIEDMONT 3-DRAWER CONSOLE



PIEDMONT #2 DINING STOOLS



SADDLESTOOL



DESIGN THINKING TABLE

SYSTEM 180

System 180

System 180 furniture is a Berlin-based design and manufacturing studio that produces well-made, functional furniture for modern workplaces and lifestyles. In an era where our working and home lives have never been more closely intertwined, System 180 creates solutions in line with its philosophy of 'functional honesty'—function comes first, and design emerges from function. Smart design, the use of high-quality materials and solid construction result in robust and lasting furniture that truly fulfils its purpose.

Origin: **Germany**
Offering: **Workspace Furniture**



TS K WORKBENCH



DOLMEN COFFEE TABLE

Tacchini

Tacchini
Rooted in the magic of an idea, the family of Italian furniture makers Tacchini have a long-standing history of connecting objects to the essence of living. They are focused on storytelling with creativity and authenticity as their language of design. Soft and enveloping organic shapes perfectly balance simplicity and grandeur. Bold details and sculptural accents help to inject a sense of perspective and engagement into commercial spaces.

Origin: Italy
Offering: Furniture | Accessories



JULEP SOFA & JOAQUIM COFFEE TABLE



KANJI COFFEE TABLE



TRAMPOLINO SIDE TABLE



FIVE TO NINE DAYBED



989 LOUNGE CHAIR



DROP IN CHAIR

tc thayer coggin

Thayer Coggin

Since its foundation in 1953, Thayer Coggin has manufactured some of the world's finest upholstered furniture, with a way of working that is unique within the furniture-making industry. Each piece of Thayer Coggin furniture is made by hand, from start to finish, by a single craftsman. This obsessive level of control is what ensures the unmatched quality and durability of Thayer Coggin's furniture, and what sets it apart.

Origin: USA
Offering: Furniture



CRUISIN'



ARROW ARMCHAIR



BOTAN NO HANA

TIME & STYLE

Time & Style

'Monozukuri' is a Japanese term that signifies technical prowess or know-how. It captures the spirit of Japan's manufacturing processes that have been handed down from generation to generation. This preservation of traditional Japanese artisanship is at the heart of Time & Style, a design business that marries modern lifestyles with the traditional aesthetics of Japan, employing skilled craftspeople in its native Japan to bring its collections of furniture, lighting, tableware and accessories to the rest of the world.

Origin: Japan
Offering: Furniture | Lighting | Accessories



DOROTHY

TOKEN

Token

New York-based Will Kavesh and Nicole Cornell founded Token in 2007. Informed by Will's background as a sculptor, painter, and engineer, the studio creates modern American furniture that is meticulously crafted with unwavering attention to detail. American hardwood, intricate marquetry veneer patterns and studio-machined hardware are expertly handled to produce casework, tables and seating that bear an unmistakable aesthetic. Token's work is a celebration of hardwood, with strikingly modernist designs in sculptural forms balancing beautifully with the wood's eye-catching grains and hues.

Origin: USA
Offering: Furniture



WARREN LOUNGE



CATENARY STOOL



DIEGO COLLECTION



UP TEA STOOL



LOUISE SOFA



ABI BAR STOOL



KOPS OVAL TABLE



KITALE CHAIR



BRACCI CHAIR

VAN ROSSUM EST. 1978

Van Rossum

This Dutch furniture-making studio specialises in the use of French oak. Working entirely by hand, Van Rossum's master craftspeople produce furniture that celebrates this ancient and beautiful material. Armed with a deep understanding of the unique structures and tannins of each piece of wood, they create furniture that brings out the individual character of the oak. Seating, tables, sideboards, and shelving are sculptural and exquisitely textured. Creating striking, simple pieces with elegance and integrity that last a lifetime and beyond.

Origin: **The Netherlands**
Offering: **Furniture**



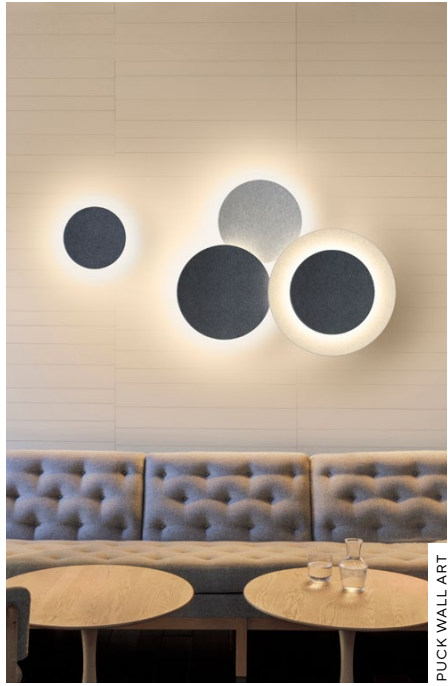
STONE TABLE



ABI CHAIR



DINING TABLE ONE



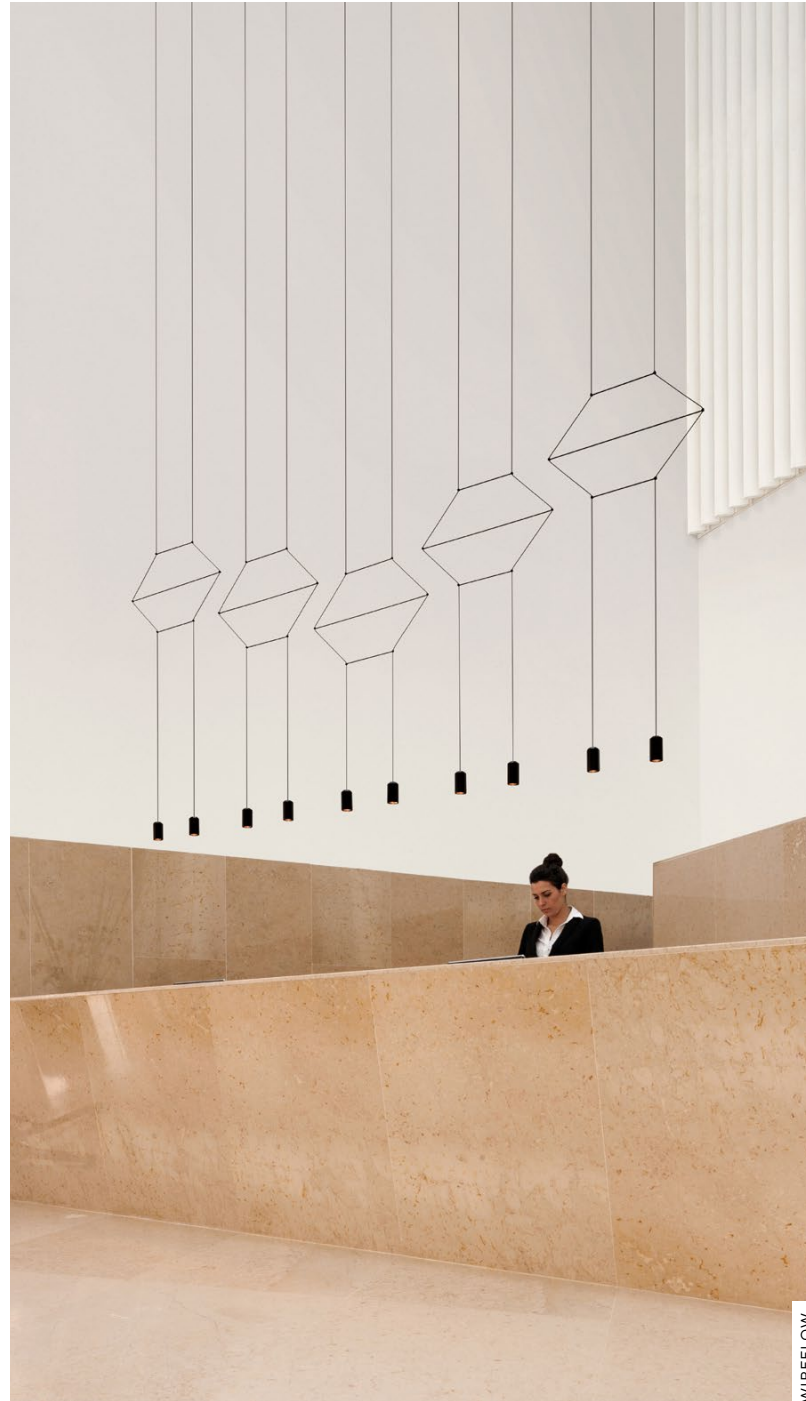
PUCK WALL ART

VIBIA

Vibia

Vibia is an ecosystem: a collection of intelligently conceived, thoughtful lighting designs that enable designers and architects to enhance the spaces they create. Inviting designers to collaborate side-by-side, Vibia ensures that its lighting solutions meet the needs of every scenario and space. The highest quality materials work in combination with innovative technologies to enhance the way we live: smart dimming control, connectivity and cutting-edge electronics allow Vibia to keep up with new cultural habits and lifestyles.

Origin: **Spain**
 Offering: **Lighting**



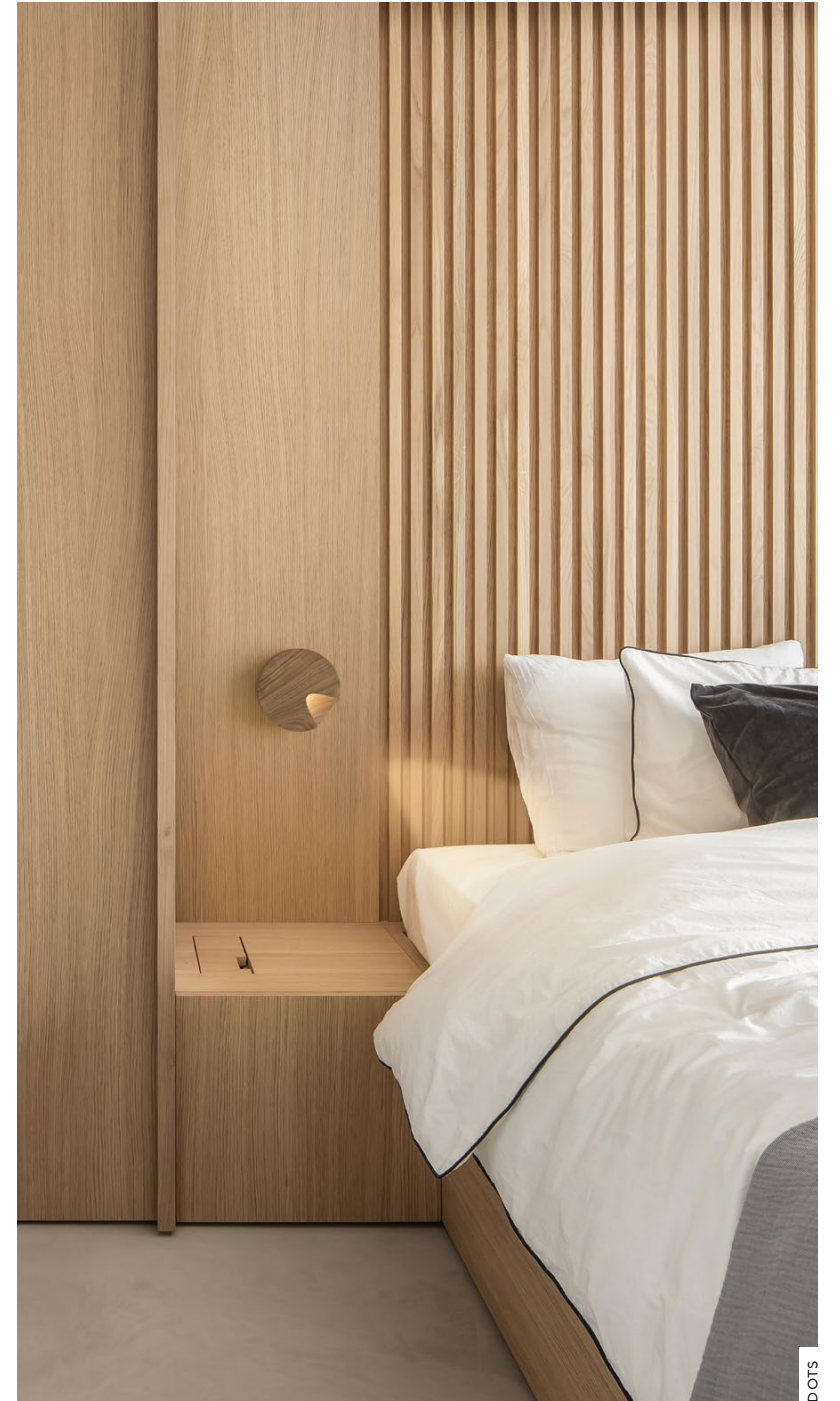
WIREFLOW



STICKS



STICKS



DOTS



vipp

Vipp

A byword for the best in Danish industrial design, the world of Vipp presents a vast and exciting contemporary collection. Rooted in functionality, Founder and skilled metal smith Holger Nielsen's first creation was the most practical of objects: a compact, pedal-controlled bin. It would prove to be the first step on their road to a more functional world, filled with beautiful and industrial objects. Today, the Vipp library includes elegantly minimal furniture, lighting, kitchens, and accessories. From exquisite furniture and intricate accessories, their portfolio of future heirlooms is a wonder to behold.

Origin: Denmark
Offering: Furniture | Accessories
Kitchen | Lighting



V2 | KITCHEN



VIPP675 | CHIMNEY CABINET



VIPP655 | POUF



VIPP626 | SCENCE



LOFT | SOFA



VIPP452 | SWIVEL CHAIR

ACCESSORIES

TOLLGÅRD



AK47

AK47
Born by fire and a love of the great outdoors, AK47 Design specialises in outdoor fire pits and accessories that combine simplicity and style. With quality as its main strength, these designs aspire to become part of their landscape, working in true harmony with their settings. These masterpieces are made in Italy but complete outdoor spaces around the globe.

Origin: **Italy**
Offering: **Outdoor Firepits**



anna torfs

Anna Torfs
Fascinated by the ancient craft of glassmaking, Belgian designer Anna began to explore the refracting nature of glass in the early 90s. Two decades on with her studio in the Czech Republic, she continues exploring this delicate material and its ability to reflect and absorb light. With each collection, she invites you to discover a beautiful world of organic forms, deep colours, and poetic structures.

Origin: **Czech Republic**
Offering: **Glassware**



Baobab
COLLECTION

Baobab
With its name paying homage to the ageing beauty of the baobab trees overlooking the African savannah, these luxury scented candles and diffusers are known for their size and original design. Brought to life in the enchanting landscape of Tanzania in 2002, the collection is now handcrafted in Belgium using the finest materials. Each piece is a sensory work of art, full of surprise and wonder.

Origin: **Belgium**
Offering: **Home Fragrances**



ELDVARM

Eldvarm
When Louise Varre founded Eldvarm in 2014 she wanted to do more than create beautiful, functional fireplace accessories: she wanted to bring people together around the fire. Rooted in Scandinavian values of simplicity and sustainability, each product is carefully crafted by professional artisans in Europe.

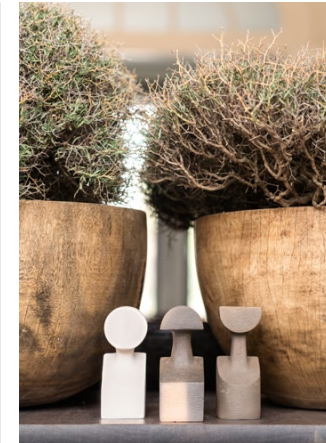
Origin: **Sweden**
Offering: **Fireplace Accessories**



FÜRSTENBERG
1747

Fürstenberg
German porcelain brand Fürstenberg is grounded in exceptional design and discerning craftsmanship. Founded in 1747, their authentic approach to the craft has led them to collaborate with artists and designers around the globe. Their range of contemporary tableware and accessories is still created by hand to this day.

Origin: **Germany**
Offering: **Tableware**



GARDECO

Gardeco
These Belgian craftsmen are creators of hand-made objects of art and decoration that help complete interior schemes across the globe. Their collections showcase the work of talented artists specialising in ceramics, bronze and glass.

Origin: **Belgium**
Offering: **Accessories**



GIOBAGNARA

Giobagnara
Giobagnara celebrates the sensual strength of leather through elevated everyday objects. Subtle expressions that merge modernity and tradition, the collection spans smaller décor pieces alongside larger home accessories.

Origin: **Italy**
Offering: **Accessories**



GUAXS

Guaxs
Sculptural objects such as vases, vessels and lamps are made by hand using authentic and sustainable materials. Founders Annette and Anselm Schaugg seek to create individual and distinctive structures that carry unique character.

Origin: **Germany**
Offering: **Accessories**



HEATSAIL

Heatsail

Extending the outdoor season, Heatsail utilises innovative technology to engineer technical outdoor products that simultaneously provide warmth and light. Signature items like DISC and DOME increase the comfort of outdoor living with their integrated heating systems. A defining quality of this Belgian light specialist is the combination of modern technology and elegant design with uncompromising function, making them a sophisticated addition to any public space.

Origin: **Belgium**
Offering: **Outdoor | Lighting**



iittala

iittala

Imbued with Scandinavian spirit, the iittala brand began as a small glass factory in Finland in 1881. Today it continues to showcase a selection of timeless tableware, cookware and interior accessories: essential objects that are intended to enhance our everyday lives.

Origin: **Finland**
Offering: **Tableware**



RUDI

Rudi

The Rudi collection bridges the gap between sustainability, functionality, and aesthetics. Offering an array of accessories including valet trays, bowls, and boxes, all of which are hand-made in Italy from the finest regenerated leather.

Origin: **Italy**
Offering: **Accessories**



SERAX

Serax

Serax is a passionate family business that collaborates with designers all over the world including acclaimed creatives Ann Demeulemeester and Piet Boon. Craft is the key ingredient in their collection of desirable tableware and accessories.

Origin: **Belgium**
Offering: **Tableware**



SKULTUNA
1607

Skultuna

Purveyor to the Royal Court of Sweden, this 400-year-old brand was founded by King Karl IX of Sweden. Hand-crafted in brass, their collection of fine metal objects includes contemporary candle holders, vases and decorative objects.

Origin: **Sweden**
Offering: **Accessories**



UTOPIA
&
UTILITY

Utopia & Utility

Utopia and Utility's handmade pieces not only add character to interior schemes but can be considered future heirlooms that combine traditional materials in innovative ways. Combining functionality with fantasy, they fuse material elements like hand-blown stained glass, polished metal, and crafted wood.

Origin: **Finland**
Offering: **Accessories**



valerie objects

Valerie Objects

Antwerp-based design label Valerie Objects enjoy collaborating with designers, architects and artists to give daily objects their beauty back. With a distinctive style that feels modern and playful, their collection features furniture, tableware and accessories.

Origin: **Belgium**
Offering: **Tableware | Furniture**



WEDGWOOD
ENGLAND 1759

Wedgwood

The story of this iconic English brand began in 1759 when founder Josiah Wedgwood began crafting elegant tableware with fine china and porcelain. Their timeless eclecticism and superior dedication to craftsmanship continue to capture attention today.

Origin: **Britain**
Offering: **Tableware**

240+ brands dedicated to the best and the bold of modern and contemporary luxury furniture.

“We are incredibly proud of our curated network of brand partners, personally chosen for their unique mix of quality, passion and design excellence.”

Staffan Tollgård
Founder and Creative Director

- &Bespoke
- &Tradition
- A.Petersen
- AK47
- Abstracta
- Agape
- Agapecasa
- Alentes
- Alessi
- Alias
- Alphenberg
- ANDlight
- Anglepoise
- Anna Torfs
- Anour
- Apparatus
- Aqua Creations
- Architect Made
- Arflex
- Ariake
- Armani Roca
- Artek
- Artemide
- Artifort
- Asplund
- Astep
- Atelje Lyktan
- Aytm
- B-Line
- BD Barcelona
- Baobab
- BassamFellows
- Bern Pederson
- Bert Frank
- Bieke Casteleyn
- Bla Station
- Bocci
- Bomma
- Buster & Punch
- Brand Van Egmond
- Brdr. Krüger
- Brightbound
- Brokis
- Brunner
- Byarums Bruk
- CTO Lighting
- Cappellini
- Carl Hanson & Son
- Case
- Cassina
- Catellani & Smith
- Cattelan Italia
- Ceccotti Collezioni
- Chilewich
- Christofle
- Cocoon
- Conde House
- Contardi
- Cuero
- DCW Editions
- DK3
- Dada
- Dare Studio
- De Castelli
- DeVorm
- Desalto
- Dicipline
- Diesel with Moroso
- Driade
- EOQ
- Eggersman
- Eikund
- Eldvarm
- Eleanor Pritchard
- Elitis
- Emeco
- Emmebi
- Emmemobili
- Ercol
- Erik Jorgenson
- Established & Sons
- Ethimo
- Ethnicraft
- Expormim
- Exteta
- Fiam
- Fibre Designs
- Finn Juhl
- Flexform
- Flos
- Fogia
- Form & Refine
- Foscarini
- Foursteel
- Frag
- Frama
- Frederica 1911
- Friends and Founders
- Fritz Hansen
- Fürstenberg
- Gabriel Scott
- Gallotti & Radice
- Gan
- Gandia Blasca
- Gardeco
- Garsnas
- Gemla
- Gervasoni
- Getama
- Giobagnara
- Giopagini
- Giopatto and Coombes
- Giorgetti
- Guaxs
- Gubi
- Handvark
- Heatsail
- Heerenhuis
- Henge
- House of Finn Juhl
- Iltalia Finland
- IP44.de
- Indigenus
- JL Moller
- Jab Ansoetz
- Jot.Jot
- Juniper
- KBH
- Kallemo
- Karakter
- Kartell
- Kasthall
- Kettal
- Kevin Reilly Collection
- Klong
- Knoll
- Kymo
- Lambert & Fils
- La Manufacture
- Lammhults
- Lampe Gras
- Lange
- Lapalma
- Lasvit
- Le Klint
- Lema
- Limited Edition
- Linteloo
- Living Divani
- Louise Roe
- Lumina
- Luteca
- Made by Hand
- Magis
- Malte Gormsen
- Man of Parts
- Mass Productions
- Mater
- Matthew McCormick
- Menu
- Meridiani
- Mernøe
- Michael Anastassiades
- Minotti
- Mobel Copenhagen
- Modo Luce
- Modus
- Molteni & C
- Mood by Flexform
- Moood
- Moroso
- Native Union
- Naver Collection
- Nemo
- New Tendency
- New Works
- Niche
- Nikari
- Norr11
- Northern
- Nuura
- O&G Studio
- OKHA
- Oasiq
- Occhio
- Offect
- Oluce
- OneCollection
- Onno
- Orsjo
- PP Møbler
- Paola Lenti
- Parachilna
- Penta
- Petit Friture
- Phillip Jeffries
- Piet Boon
- Piet Hein Eek
- Pilat & Pilat
- Poiat
- Poltrona Frau
- Porada
- Porro
- Punt
- Quasar
- RBW
- Resident
- RUDI
- Rakumba
- Rimadesio
- Röshults
- SPO1
- Sancal
- Scavolini
- Schonbuch
- Seletti
- Serax
- Sibast
- Skagerak
- SkLO
- Skram
- Skultuna
- Sovet Italia
- Stellar Works
- Stolab
- String Furniture
- Swedese
- System 180
- Tacchini
- Tala
- Taschen
- Thayer Coggin
- Time & Style
- Token Furniture
- Tolix
- Ton
- Utopia & Utility
- Valerie Objects
- Van Rossum
- Varaschin
- Vibia
- Rimadesio
- Vipp
- Vispring
- Vitra
- Volume K
- Warm Nordic
- Wedgewood
- When Objects Work
- XLBoom
- Zanotta
- Zeitraum

AGAPECASA



AK47

emeco

HOUSE OF
FINN JUHL

GABRIEL SCOTT



ANOUR 



GARDECO

GIOBAGNARA

Giopato & Coombes

Baobab
COLLECTION

BassamFellows

BOCCI

GIORGETTI 

GUAXS



brightbound

Byarums Bruk

CECCOTTICOLLEZIONI

iittala

INDIGENUS

JUNIPER

COCOON

DE CASTELLI

DE LA ESPADA

Karakter

KEVIN REILLY
COLLECTION

KØBENHAVNS-MØBELSNEDKERI

edra

eikund



LASVIT

LEINA

LINTELOO

MADE BY HAND

MAN OF PARTS

 MATTHEW McCORMICK

QUASAR[®]
HOLLAND

Rakumba



MERIDIANI

MICHAELANASTASSIADES

MOROSO[™]
the beauty of design

RÖSHULTS

Rubn

RUDI

Molteni & C

NEMO

NICHE

SERAX

SKLO

skram

O&G

Occhio

OKHA

 SKULTUNA
1607

SYSTEM  180

 Tacchini

ONNO

ONECOLLECTION

OVERGAARD & DYRMAN

 thayer coggin

TIME & STYLE

TOKEN

PIETBOON

porada

PP

valerie objects

VAN ROSSUM
EST. 1978

VIBIA

RESIDENTIAL:

TOLLGARD SHOWROOMS

+44 (0)20 7952 6070 ~ BELGRAVIA

+44 (0)20 8067 2123 ~ CHELSEA HARBOUR

SHOP@TOLLGARD.COM

COMMERCIAL:

TOLLGARD CONTRACTS

+44 (0)20 7952 6063

CONTRACTS@TOLLGARD.COM

TOLLGÅRD

WWW.TOLLGARD.COM